

STATE OF LOUISIANA
DEPARTMENT OF HIGHWAYS
PLANS OF PROPOSED
STATE HIGHWAY
PASS MANCHAC BRIDGE
PONCHATOULA - FRENIER HIGHWAY
TANGIPAHOA AND ST. JOHN THE BAPTIST PHS.
STATE ROUTE No 33
STATE PROJECT No 17-02-22
CONTRACT No 1

INDEX TO SHEETS

SHEET NO.	DESCRIPTION
1	TITLE SHEET.
2	PILE DETAILS FOR 16", 18" AND 24" PRECAST CONCRETE PILES.
3	PILE DETAILS FOR 36" AND 54" PRECAST, PRESTRESSED CONCRETE PILES.
4	PROJECT ENGINEER'S OFFICE.
5-6	FENDER SYSTEM.
7-8	LAYOUT OF REVETMENTS (NORTH AND SOUTH APPROACHES).
9-10	REVETMENT DETAILS.
11-12	NAVIGATION LIGHTS AND DETAILS.
13	TEMPORARY APPROACHES.
14	SPANS No 1 THRU 20 AND SPANS No 24 THRU 51.
15-16	SPANS No 21, 22 AND 23.
17	HANDRAIL DETAILS.
18	SUMMARY OF QUANTITIES.
19-23	CORE BORINGS AND TEST PILES.
24	BENTS No 1 AND 52.
25	BENTS No 2 AND 48.
26	BENTS No 3 THRU 7 AND No 50 THRU 51.
27	BENTS No 8, 14 AND 43.
28	BENTS No 9 THRU 11 AND No 44 THRU 48.
29	BENTS No 12, 18, 15 AND No 40 THRU 42.

PRINCIPAL	ALTERNATE
30	30 A
31	31 A - 32 A
32	32 A - 34 A
33	33 A - 36 A
34-35	34 A - 38 A
36-37	35 A - 40 A
38	36 A - 42 A
39	37 A - 44 A

NO.	DESCRIPTION	STD. PLAN	REV. DATE
101	ALPHABET	C.M. 95	NOV. 54
102	YEAR PLATE	C.M. 97	JAN. 46
103	SLUMP TEST MOLD	R.M. 14	SEPT. 40
104	PROJECT SIGN	R.S. 23	JUNE 33

TOTAL NO. OF SHEETS = 59

201 TYPICAL SECTIONS
202 - 204 PLAN AND PROFILE
205 - 211 CROSS SECTIONS

SCHEDULE OF REVISIONS

DATE	REVISION	DATE	RECOMMENDED	DATE	APPROVED
3-23-55	REVISED TO SHOW REVISIONS TO THE PROJECT DRAWINGS ON THE "AS BUILT" BASIS.	3-23-55	J. R. James		

TYPE OF CONSTRUCTION:
HIGH LEVEL FIXED BRIDGE.

DELIVERY POINTS:
MANCHAC, LA. I.C.R.R.
OR BARGE AT BRIDGE SITE.

INDEX TO SHEETS

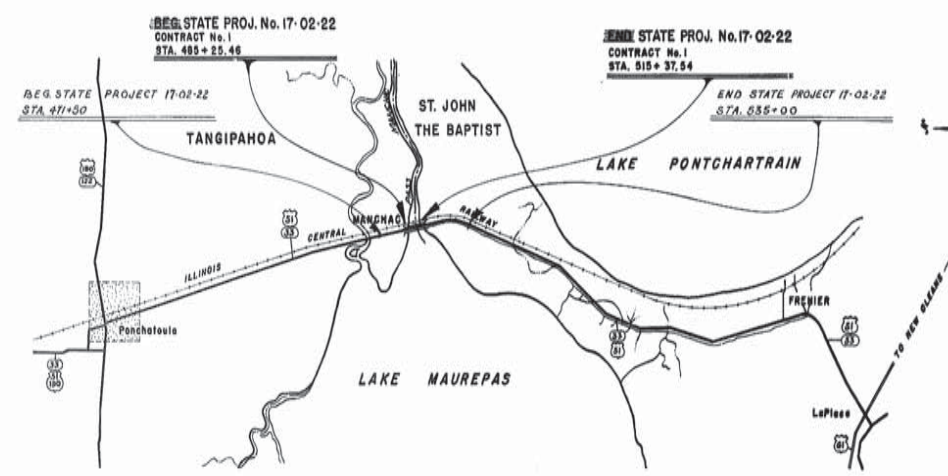
SHEET NO.	DESCRIPTION
1	TITLE SHEET
2	LAY-OUT MAP
3	TYPICAL SECTION
4-6	PLAN & PROFILE
7	PILE DETAILS FOR 16", 18" AND 24" PRECAST CONCRETE PILES
8	PILE DETAILS FOR 36" AND 54" PRECAST CONCRETE PILES
9	PROJECT ENGINEER'S OFFICE
10-11	FENDER SYSTEM
12-13	LAYOUT OF REV. (NORTH/SOUTH APPROACHES)
14-15	REVETMENT DETAILS
16-17	NAVIGATION LIGHTS DETAILS
18	TEMPORARY APPROACHES
19	SPANS No 1 THRU 20 AND No 24 THRU 51
20-21	SPANS No 21, 22, 23
22	HANDRAIL DETAILS
23	SUMMARY OF QUANTITIES
24-28	CORE BORINGS & TEST PILES
29	BENTS No 1 & 52
30	BENTS No 2 & 48
31	BENTS No 3 THRU 7 AND No 50-51
32	BENTS No 8, 14 & 43
33	BENTS No 9 THRU 11 AND No 44-48
34	BENTS No 12, 18, 15 AND No 40-42
35	PRINCIPAL
36	BENTS No 16 & 39
37	BENTS No 17, 18, 36, 37 AND 38
38	BENTS No 19, 21, 32, 33, 34 AND 35
39	BENTS No 20, 21, 22, 23, 29 AND 30
40	BENTS No 22 AND 23
41	BENT No 24
42	BENT No 25
43	CONNECTION DETAILS BENTS No 17 THRU 21, 24, 25 AND No 28 THRU 38
44	GENERAL PLAN
45	BORINGS - TEST AND PERMANENT PILE DATA

STATE PROJECT	PARISH	SHEET NO.
17-02-22	Tangipahoa St. John The Baptist	42

CONTRACT No 1

FIELD BOOKS

BOOK NO.	DESCRIPTION
38-39A	DIARY
39-39B	DIARY
39-39C	DIARY
39-39D	DIARY
39-39E	DIARY
39-39F	DIARY
39-39G	DIARY
39-39H	DIARY
39-39I	DIARY
39-39J	DIARY
39-39K	DIARY
39-39L	DIARY
39-39M	DIARY
39-39N	DIARY
39-39O	DIARY
39-39P	DIARY
39-39Q	DIARY
39-39R	DIARY
39-39S	DIARY
39-39T	DIARY
39-39U	DIARY
39-39V	DIARY
39-39W	DIARY
39-39X	DIARY
39-39Y	DIARY
39-39Z	DIARY



AS BUILT PLAN

THE DRAWINGS FOR THIS PROJECT HAVE BEEN REVISED TO INCLUDE ALL "AS BUILT" REVISIONS AS SHOWN BY THE PROJECT DRAWINGS ON THE "AS BUILT" BASIS.

J. R. James,
BRIDGE DESIGN ENGINEER,
BY *J. R. James* DATE 3/23/55

RECOMMENDED FOR APPROVAL

TRAFFIC & PLANNING ENGINEER

RECOMMENDED FOR APPROVAL

ROAD DESIGN ENGINEER

RECOMMENDED FOR APPROVAL

J. R. James 3-23-55
BRIDGE DESIGN ENGINEER

DATUM USED:
MAG. VAR:
BEARINGS ARE
TRANSIT BOOKS:
LEVEL BOOKS: 37-070
PLAN:
SCALES
PROFILE: HOR.
VERT.

LAYOUT MAP
SCALE: 1 INCH = 10,560 FEET

LENGTH OF PROJECT

DESCRIPTION	ALGEBRAIC SUM OF ALL EQUATIONS	GROSS LENGTH FEET	EXCEPTION FEET	BRIDGE LENGTH FEET	BRIDGE LENGTH MILES	ROADWAY LENGTH FEET	ROADWAY LENGTH MILES
471+00 - 485+25.46				8012.08	0.870		
471+00 - 485+25.46						1375.46	0.260
485+25.46 - 515+37.99				3012.08	0.570		
515+37.99 - 555+00						1962.46	0.372
TOTAL LENGTH OF BRIDGES				8012.08	0.870		
TOTAL LENGTH OF ROADWAY						5552.92	0.652
TOTAL MILES NET & GROSS							1.522

APPROVED

J. R. James 3-23-55
BRIDGE ENGINEER

RECOMMENDED FOR APPROVAL

DISTRICT ENGINEER
DEPARTMENT OF COMMERCE
BUREAU OF PUBLIC ROADS

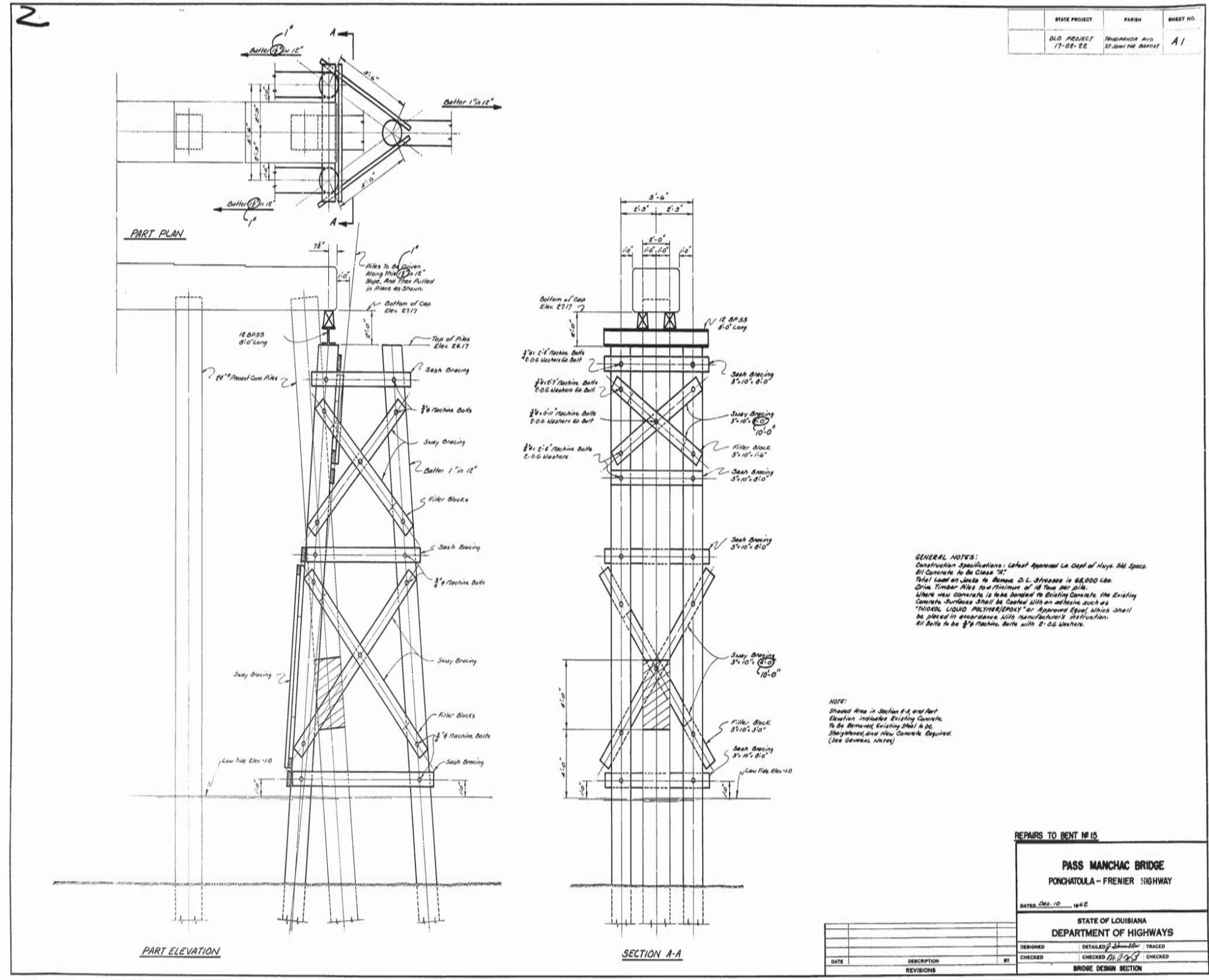
APPROVED

DIVISION ENGINEER
DEPARTMENT OF COMMERCE
BUREAU OF PUBLIC ROADS

FINAL TRACINGS

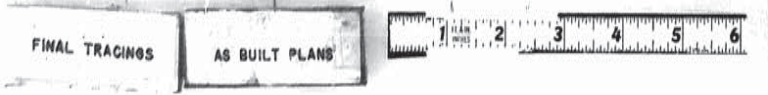
AS BUILT PLANS

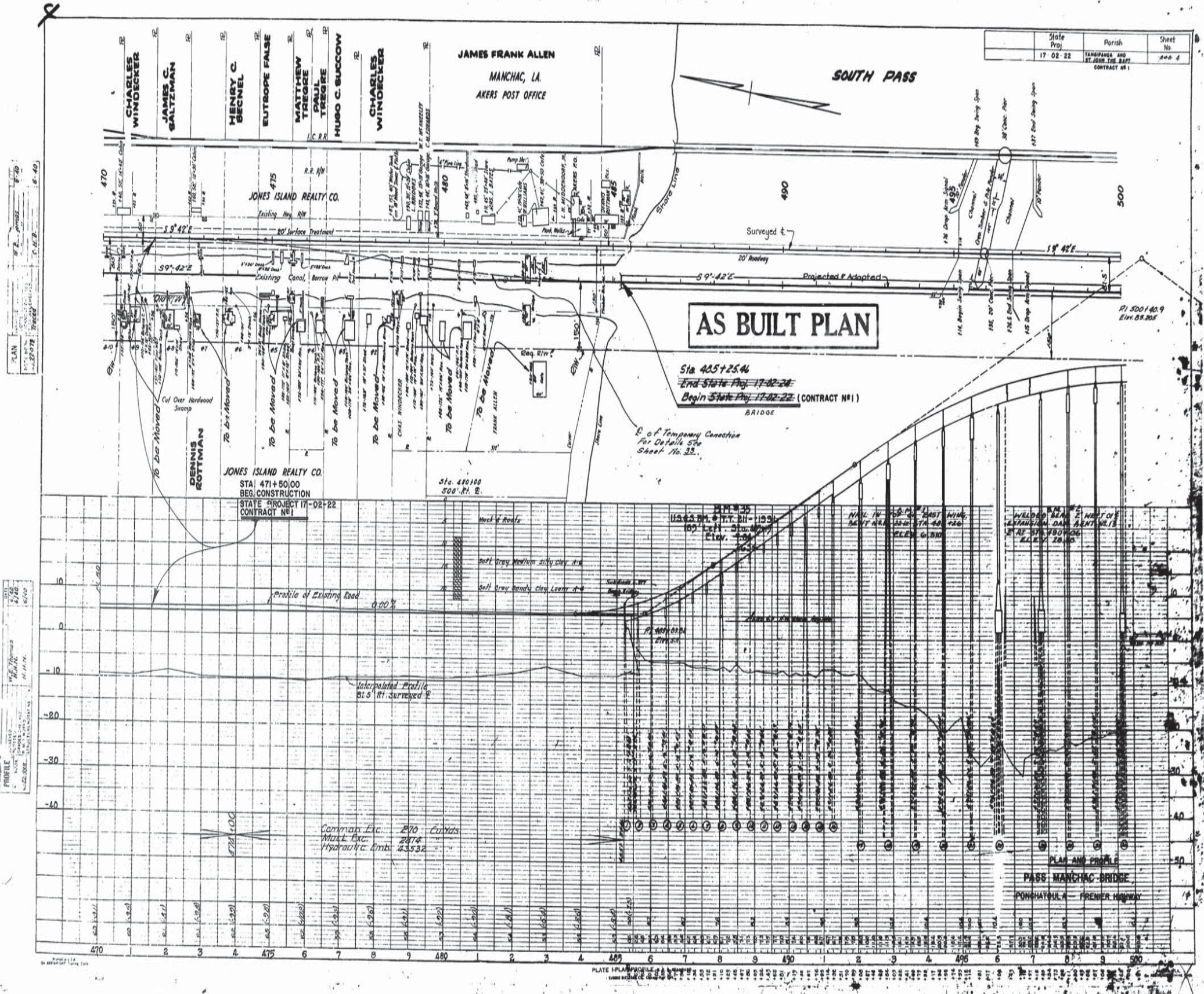




STATE PROJECT	PARISH	SHEET NO.
OLD PROJECT 17-02-22	TERREBONNE AND ST. JOHN THE BAPTIST	A1

REPAIRS TO BENT # 15		
PASS MANCHAC BRIDGE		
PONCHATOULA - FRENIER HIGHWAY		
DATED: Oct. 10, 1962		
STATE OF LOUISIANA DEPARTMENT OF HIGHWAYS		
DESIGNED	DETAILED <i>J. B. ...</i>	TRACED
CHECKED	CHECKED <i>J. B. ...</i>	CHECKED
BRIDGE DESIGN SECTION		





PLAN
 DATE: 11/2/22
 DRAWN BY: T. M. B.
 CHECKED BY: T. M. B.

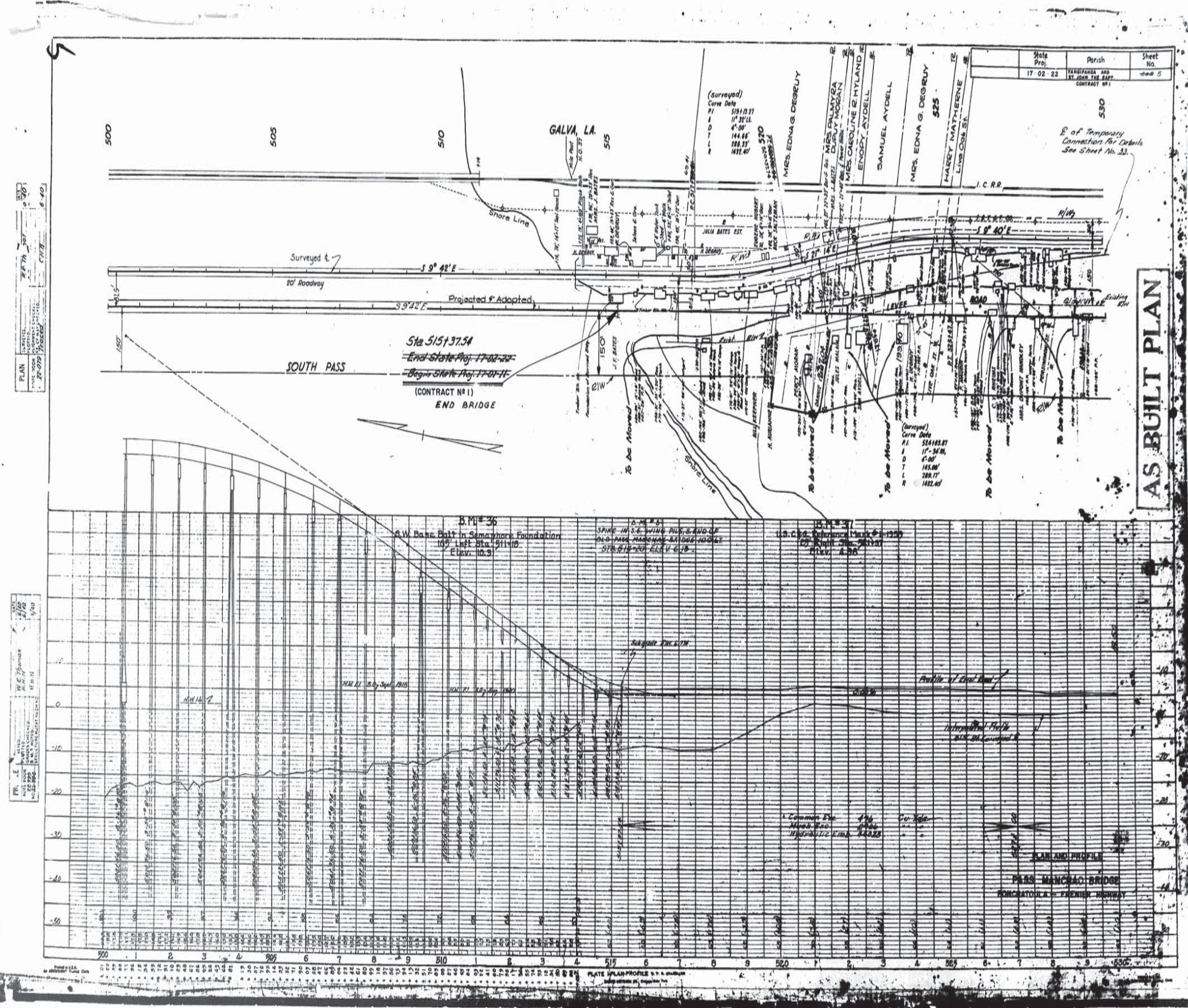
PROFILE
 DATE: 11/2/22
 DRAWN BY: T. M. B.
 CHECKED BY: T. M. B.

FINAL TRACINGS

AS BUILT PLANS



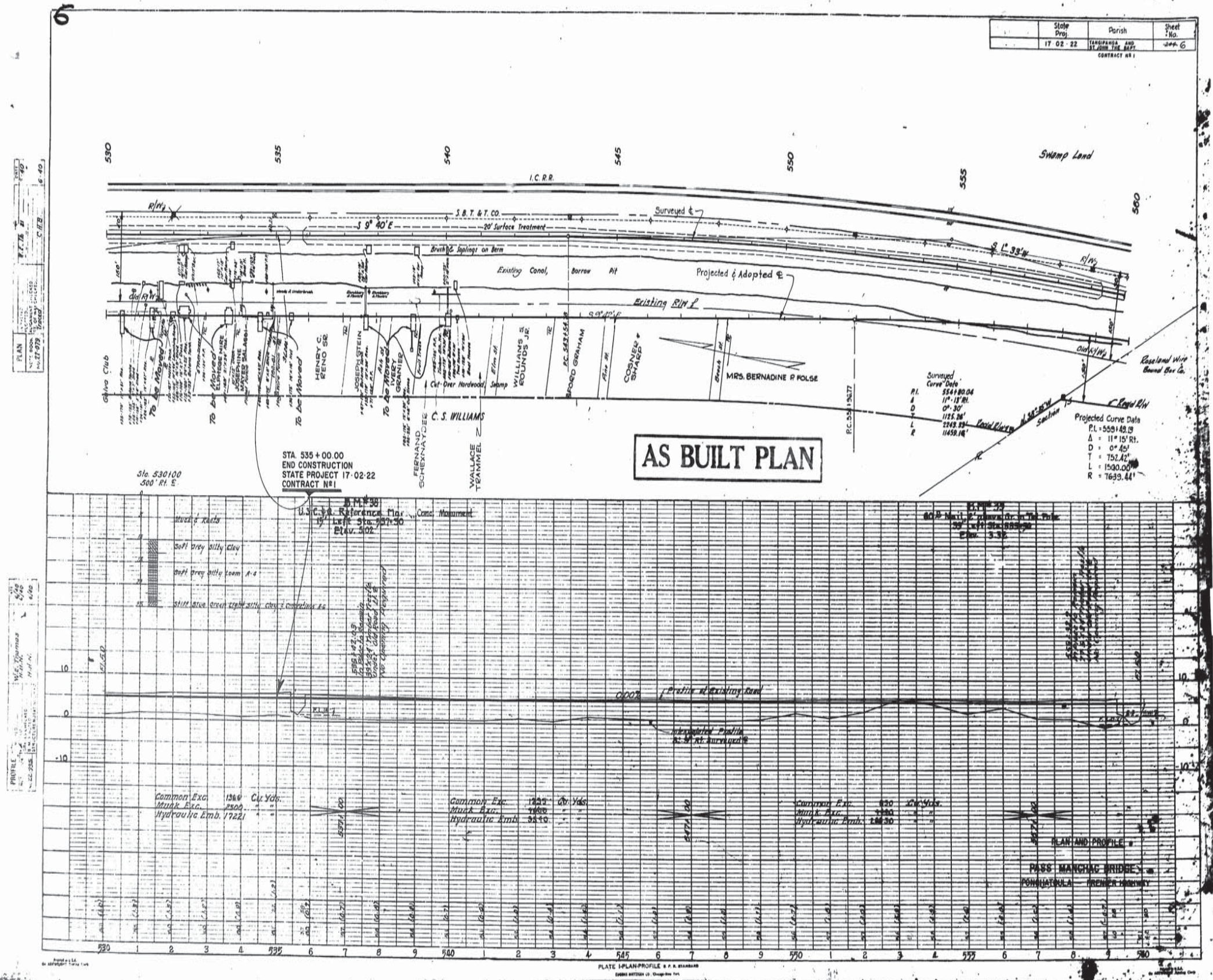
PLATE 1-PLAN AND PROFILE
 SCALE: 1" = 40'



FINAL TRACINGS

AS BUILT PLANS

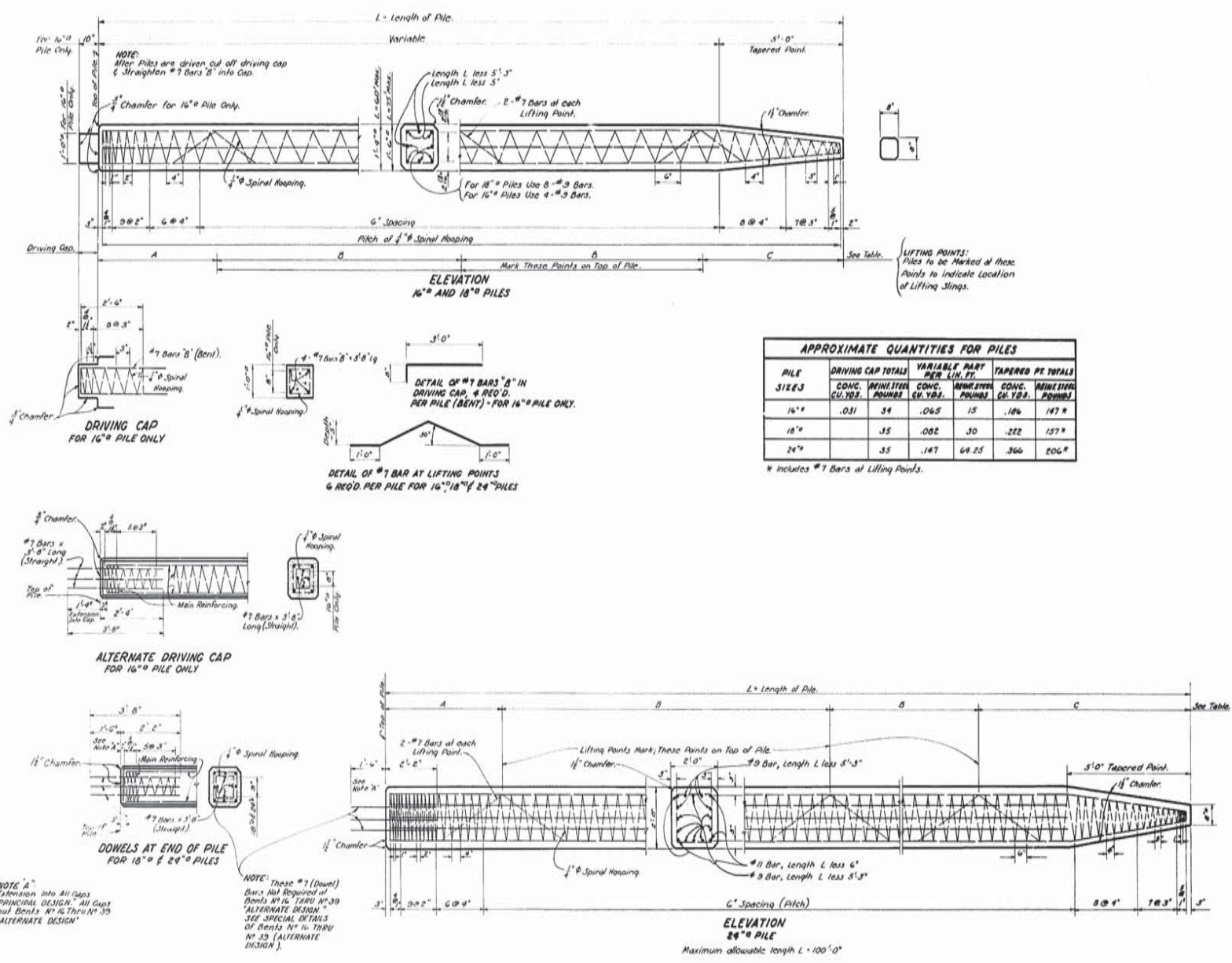




FINAL TRACINGS AS BUILT PLANS



STATE PROJECT	PARISH	SHEET OF
17-02-22	Terrebonne and St. Lande Parishes	7
CONTRACT # 1		



LIFTING POINT DIMENSIONS

PILE LENGTH	A	B	C
45'	7'-3"	14'-3"	8'-0"
46'	7'-3"	14'-10"	8'-0"
47'	7'-3"	15'-2"	8'-0"
48'	7'-3"	15'-6"	8'-0"
49'	7'-3"	15'-10"	8'-0"
50'	8'-0"	16'-2"	8'-0"
51'	8'-0"	16'-6"	8'-0"
52'	8'-0"	16'-10"	8'-0"
53'	8'-0"	17'-2"	10'-0"
54'	8'-0"	17'-6"	10'-0"
55'	8'-0"	17'-10"	10'-0"
56'	8'-0"	18'-1"	10'-0"
57'	8'-0"	18'-5"	10'-0"
58'	8'-0"	18'-9"	11'-0"
59'	8'-0"	19'-3"	11'-0"
60'	8'-0"	19'-7"	11'-0"
61'	8'-0"	19'-11"	11'-0"
62'	10'-0"	20'-1"	11'-0"
63'	10'-0"	20'-5"	11'-0"
64'	10'-0"	20'-9"	11'-0"
65'	10'-0"	21'-3"	11'-0"
66'	10'-0"	21'-7"	11'-0"
67'	10'-0"	21'-11"	11'-0"
68'	11'-0"	22'-3"	11'-0"
69'	11'-0"	22'-7"	11'-0"
70'	11'-0"	23'-1"	11'-0"
71'	11'-0"	23'-5"	11'-0"
72'	11'-0"	23'-9"	11'-0"
73'	11'-0"	24'-3"	11'-0"
74'	11'-0"	24'-7"	11'-0"
75'	11'-0"	25'-1"	11'-0"
76'	11'-0"	25'-5"	11'-0"
77'	11'-0"	25'-9"	11'-0"
78'	11'-0"	26'-3"	11'-0"
79'	11'-0"	26'-7"	11'-0"
80'	11'-0"	27'-1"	11'-0"
81'	11'-0"	27'-5"	11'-0"
82'	11'-0"	27'-9"	11'-0"
83'	11'-0"	28'-3"	11'-0"
84'	11'-0"	28'-7"	11'-0"
85'	11'-0"	29'-1"	11'-0"
86'	11'-0"	29'-5"	11'-0"
87'	11'-0"	29'-9"	11'-0"
88'	11'-0"	30'-3"	11'-0"
89'	11'-0"	30'-7"	11'-0"
90'	11'-0"	31'-1"	11'-0"
91'	11'-0"	31'-5"	11'-0"
92'	11'-0"	31'-9"	11'-0"
93'	11'-0"	32'-3"	11'-0"
94'	11'-0"	32'-7"	11'-0"
95'	11'-0"	33'-1"	11'-0"
96'	11'-0"	33'-5"	11'-0"
97'	11'-0"	33'-9"	11'-0"
98'	11'-0"	34'-3"	11'-0"
99'	11'-0"	34'-7"	11'-0"
100'	11'-0"	35'-1"	11'-0"

APPROXIMATE QUANTITIES FOR PILES

PILE SIZE	DRIVING CAP TOTALS		VARIABLE PART PER L.F.T.		TAPERED PT TOTALS	
	CONC. CU. YDS.	REINFORC. POUNDS	CONC. CU. YDS.	REINFORC. POUNDS	CONC. CU. YDS.	REINFORC. POUNDS
16"	.031	34	.065	15	.186	147.9
18"		35	.082	30	.222	157.9
24"		35	.147	69.25	.360	206.9

* Includes #7 Bars at Lifting Points.

GENERAL NOTES:
 CONSTRUCTION SPECIFICATIONS: Latest approved
 La Dept. of Highways. All Specs.
 Dimensions to Reinforcing Steel are to Bar Centers.
 Reinforcement bars shall be Intermediate or Hard
 Grade, A.S.T.M. A-63, or Bar Steel, A.S.T.M. A-6.
 All Concrete to be Class "A".
 Chamfer all Corners as Noted.

PILE DETAILS FOR 16", 18" & 24" PRECAST CONCRETE PILES

AS BUILT PLAN

PASS MANCHAC BRIDGE
 PONCHATOULA - FRENIER HIGHWAY

DATE: NOV. 12 1957

STATE OF LOUISIANA
 DEPARTMENT OF HIGHWAYS

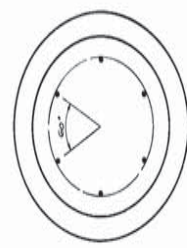
DESIGNED BY: [Signature] CHECKED BY: [Signature] DRAWN BY: C. Newkley

CONCERN: [Signature] CHECKED BY: [Signature] CHECKED BY: [Signature]

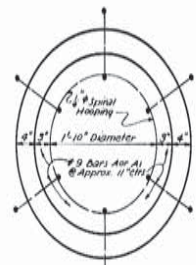
BRIDGE DESIGN SECTION

8

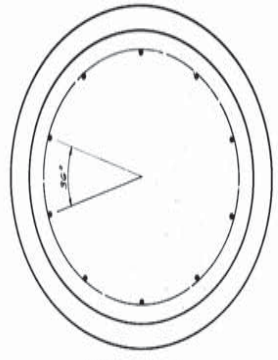
STATE PROJECT	PARISH	SHEET #
17 02 22	Orleans and St. Charles	9 C
CONTRACT #1		



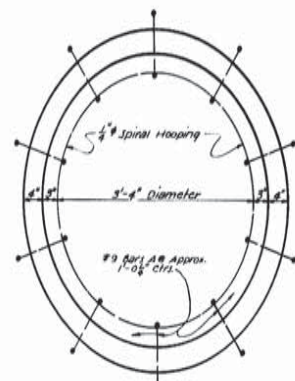
SECTION B-B



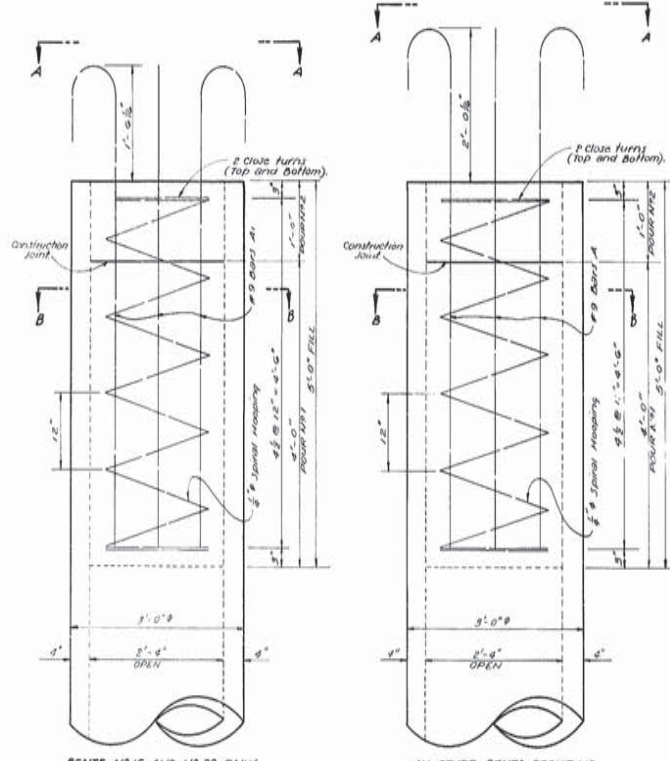
VIEW A-A



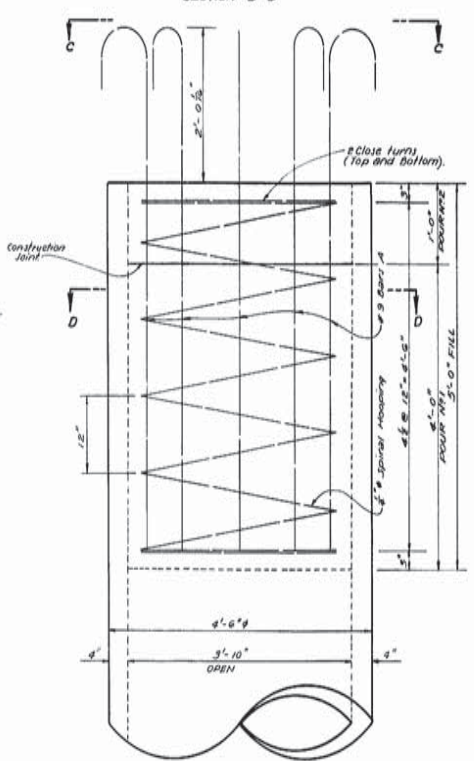
SECTION D-D



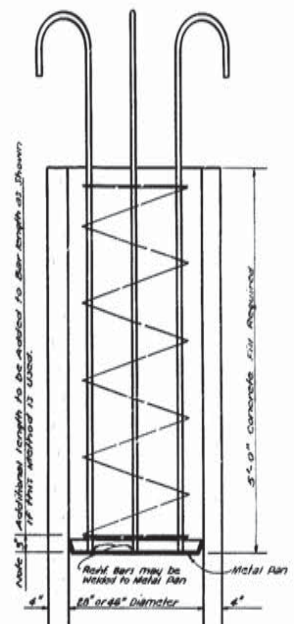
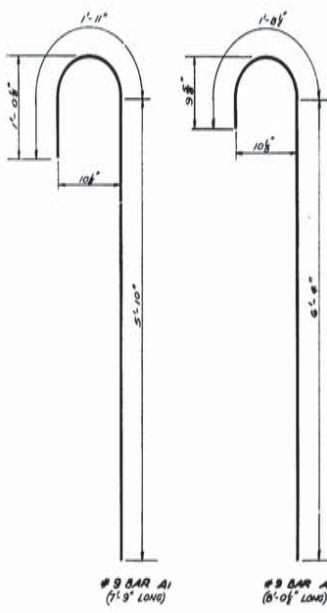
VIEW C-C



DETAILS OF 36" PRECAST, PRESTRESSED CONCRETE PILES SHOWING CONCRETE FILL AND REINFORCING STEEL



DETAILS OF 54" PRECAST, PRESTRESSED CONCRETE PILES SHOWING CONCRETE FILL AND REINFORCING STEEL



SUGGESTED METHOD OF FORMING 5 FOOT CONCRETE FILL FOR 36" AND 54" PRECAST, PRESTRESSED CONCRETE PILES

NOTE: No additional payment will be made for the 3' additional length per bar required when using above method.

GENERAL NOTES:
CONSTRUCTION SPECIFICATIONS: Latest Approved La Dept. of Highw. Spec.
Reinforcement Bars shall be Intermediate or Hard Grade A.S.T.M. A16 or Rail Steel A.S.T.M. A16.
Dimensions to reinforcing steel are to bar centers. All concrete to be Class 5.

ESTIMATED QUANTITIES FOR ONE PILE			
BENTS #16 OR 39		ALL OTHER BENTS REQUIRING 36" PRECAST, PRESTRESSED CONCRETE PILES	
CLASS 5 CONCRETE	0.79 CU YDS.	CLASS 5 CONCRETE	0.79 CU YDS.
DEFORMED REINFORCING STEEL	166 LBS.	DEFORMED REINFORCING STEEL	172 LBS.

ESTIMATED QUANTITIES FOR ONE PILE	
ALL BENTS REQUIRING 54" PRECAST, PRESTRESSED CONCRETE PILES	
CLASS 5 CONCRETE	2.14 CU YDS.
DEFORMED REINFORCING STEEL	285 LBS.

QUANTITIES SHOWN ARE FOR 5'-0" FILL (FOUR #11 PLUS FOUR #12).

NOTE: FOUR #12 (SHADE AREA) TO BE POURED MONOLITHIC WITH CAP OR FOOTING.

NOTE: CLASS 5 CONCRETE IN 5' FILLS TO BE FIELD FOR AS "CLASS 5" CONCRETE (BENT).

AS BUILT PLAN

PILE DETAILS FOR 36" AND 54" PRECAST, PRESTRESSED CONG. PILES

PASS MANCHAC BRIDGE
PONCHATOLA - FRENIER HIGHWAY

DATED: OCT. 1958

STATE OF LOUISIANA
DEPARTMENT OF HIGHWAYS

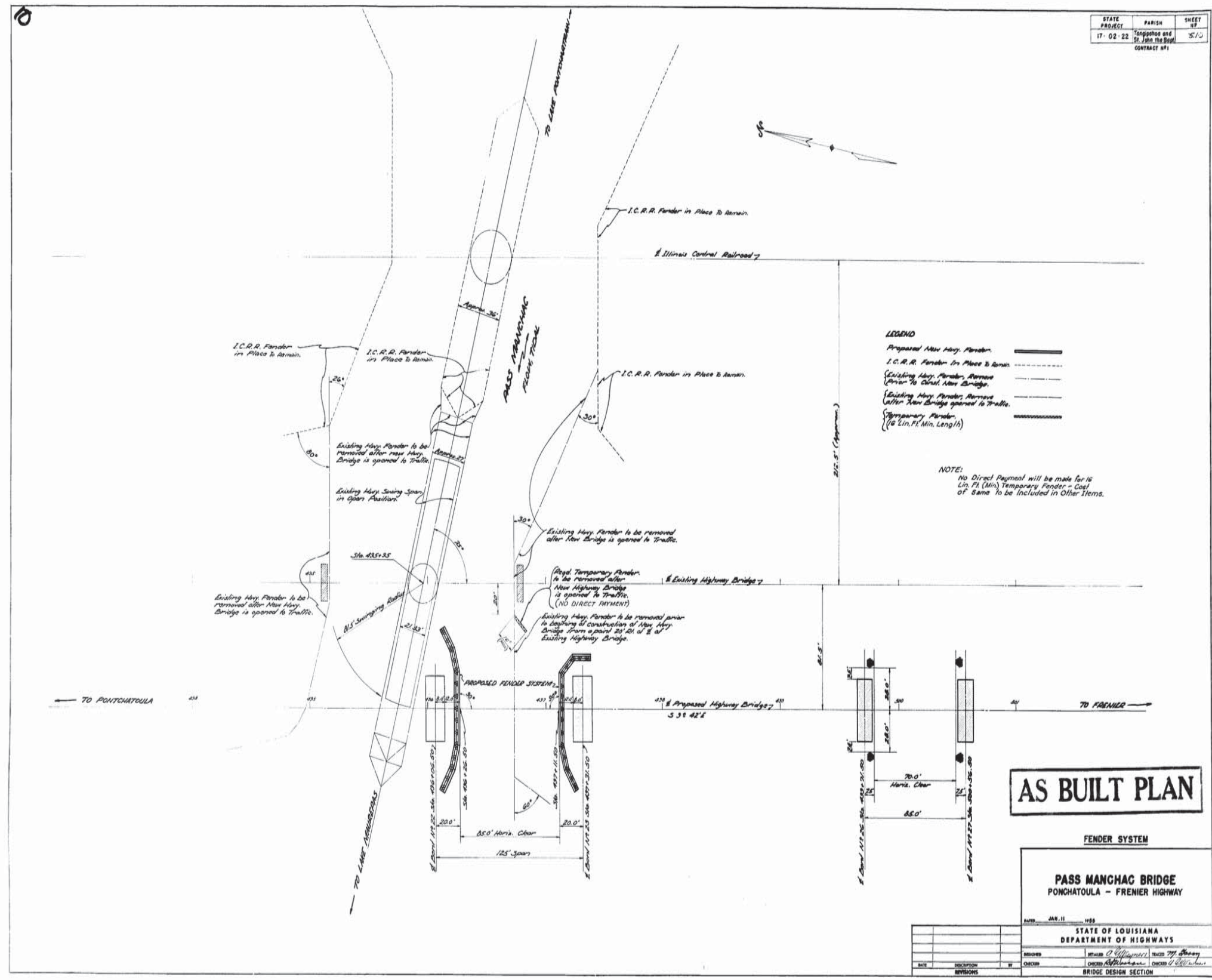
DESIGNED	BY	DATE
CHECKED	BY	DATE
TRACED	BY	DATE
CHECKED	BY	DATE

BRIDGE DESIGN SECTION

FINAL TRACINGS

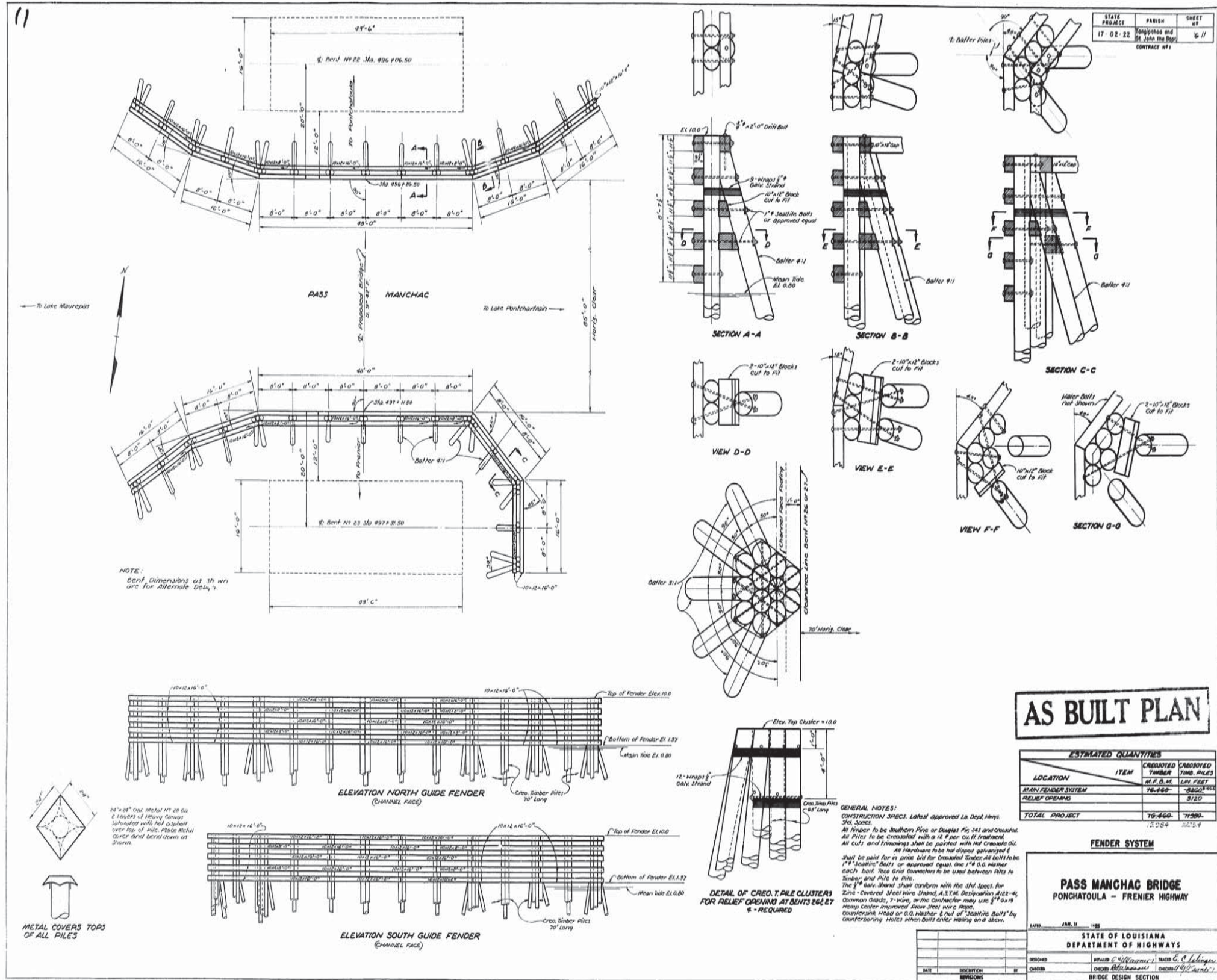
AS BUILT PLANS

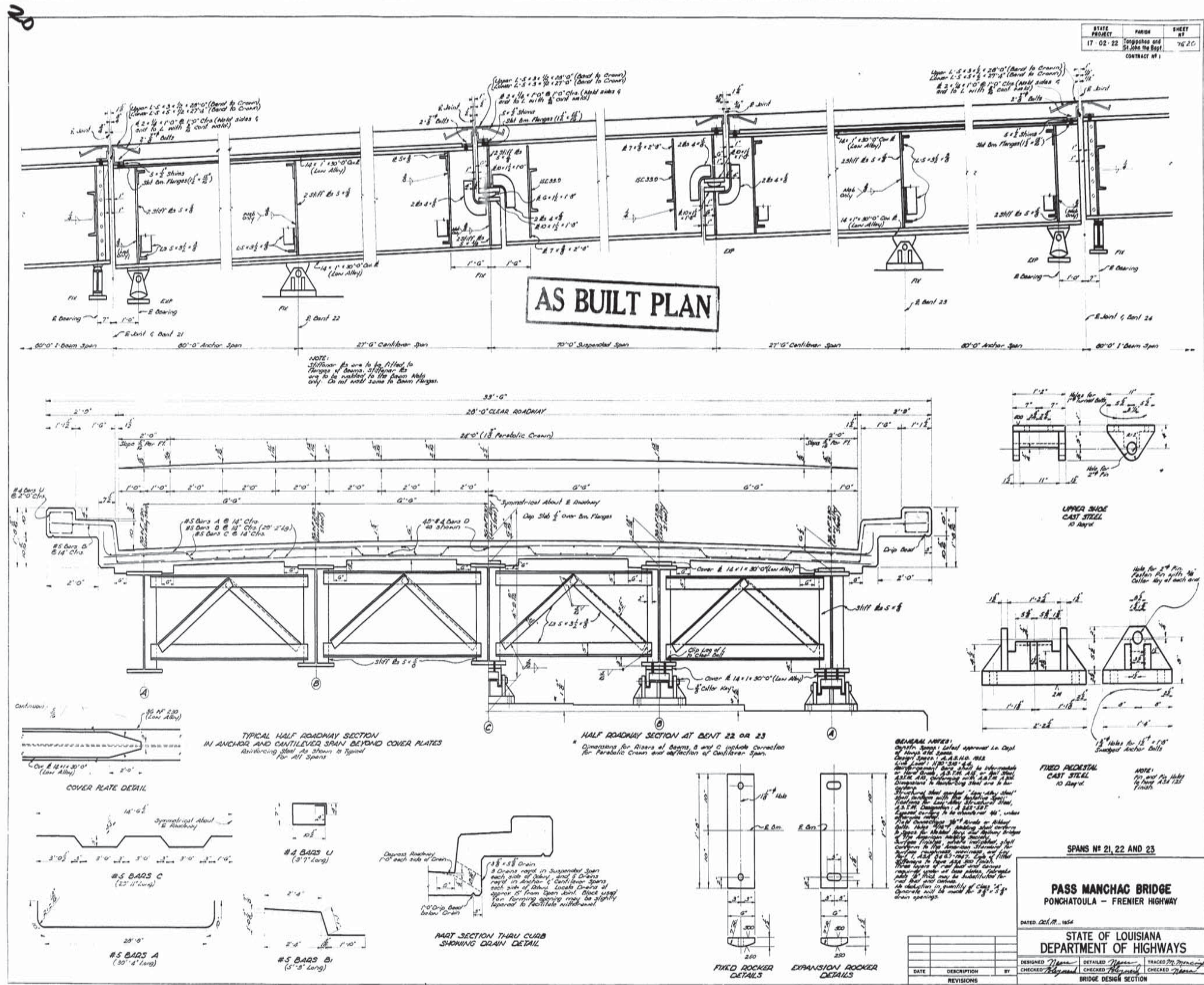




FINAL TRACINGS







SPANS NO 21, 22 AND 23

PASS MANCHAC BRIDGE
 PONCHATOULA - FRENIER HIGHWAY

DATED Oct. 11, 1954

STATE OF LOUISIANA
 DEPARTMENT OF HIGHWAYS

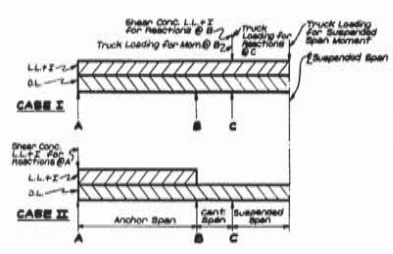
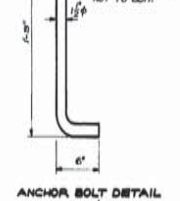
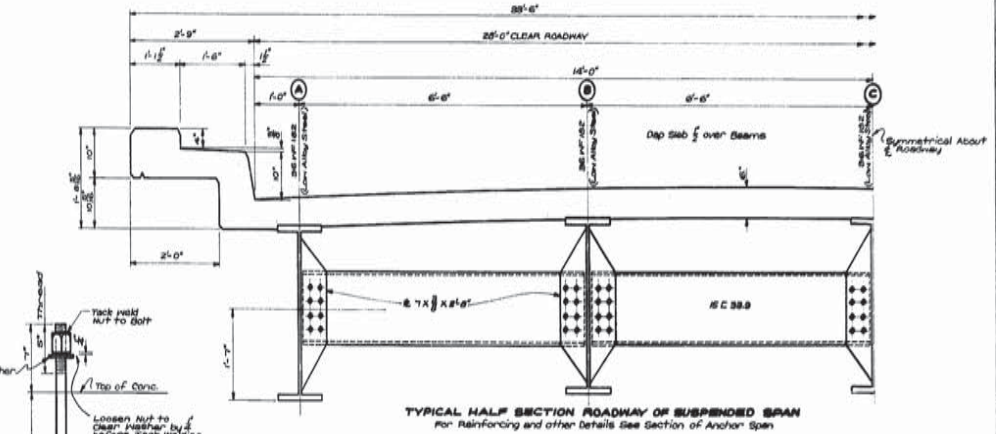
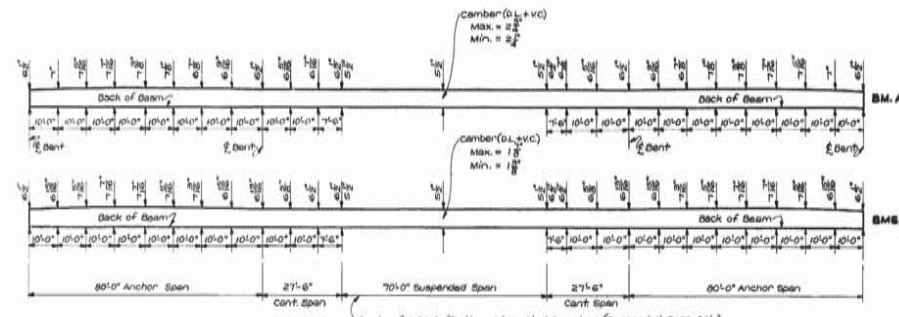
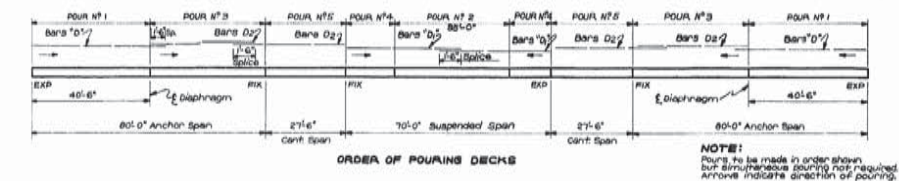
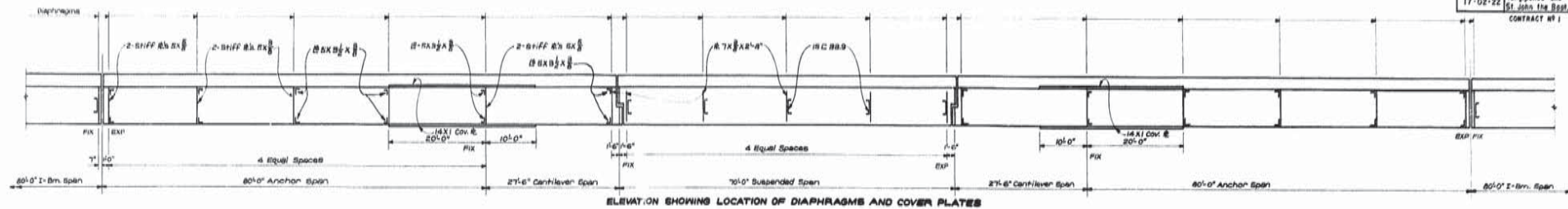
DESIGNED: [Signature] CHECKED: [Signature] TRACKED: [Signature]
 CHECKED: [Signature] CHECKED: [Signature] CHECKED: [Signature]

BRIDGE DESIGN SECTION

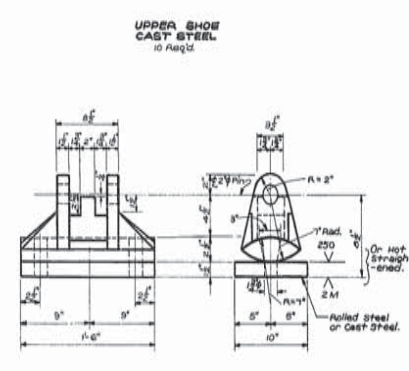
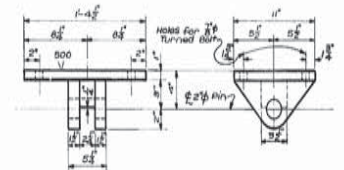
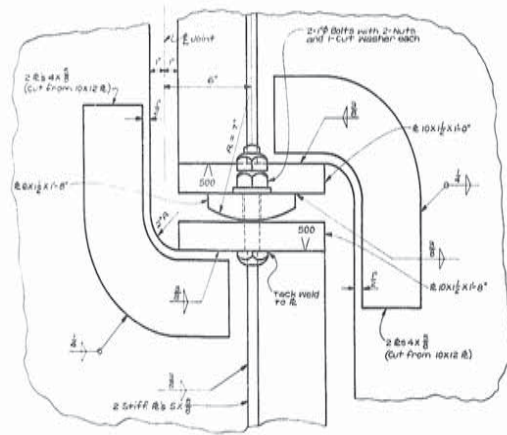
SHEET 1 OF 2

21

STATE PROJECT	PARISH	SHEET #
17-02-22	Tangipahoa and St. John the Baptist	16-21
CONTRACT # 1		



BAR	HT	SIZE	LENGTH	TOTAL LENGTH	LOCATION	
A	245	#8	20'-0"	7437'-0"	S20	
B	245	#8	25'-0"	7145'-0"	"	
C	245	#8	25'-0"	7265'-0"	"	
D	480	#8	6'-0"	2874'-0"	CURB	
Total #8 Bars = 24480'-0" = 38470 Lbs.						
D	88	#4	4'-0"	4088'-0"	S20 & CURB (Anchor Span)	
D	88	#4	5'-0"	5226'-0"	Slab & CURB (Suspended Span)	
U	180	#4	6'-0"	6480'-0"	Sidewalk CURB	
D	186	#4	28'-0"	6437'-0"	Slab & CURB (Anchor Span)	
Total #4 Bars = 14807'-0" = 3945 LBS.						
QUANTITIES						
CLASS "A" CONCRETE					206.88	CU. YDS.
DEPR. REIN. STEEL					55-415	LBS.
PAS. LOW ALLOY STEEL					324,530	LBS.
PAS. CARBON STEEL					35800	LBS.



BMS CASE	MOMENTS AND REACTIONS	ANCHOR AND CANTILEVER SPANS			SUSPENDED SPAN	
		A	B	C	SIZE OF BEAM	SIZE OF DECK
I	Moments		-2331 K		36 WF 230 LOW ALLOY STEEL	+1241 K
	Reactions		193.0 K	74.6 K		36 WF 182 LOW ALLOY STEEL
II	Moments		+840 K			
	Reactions		64.8 K			
B OR C	Moments		-2331 K		36 WF 230 LOW ALLOY STEEL	+1215 K
	Reactions		156.6 K	76 K		36 WF 182 LOW ALLOY STEEL
II	Moments		+1890 K			
	Reactions		72 K			

AS BUILT PLAN

SPANS # 21, 22 AND 23

PASS MANCHAC BRIDGE
PONCHATOULA - FRENIER HIGHWAY

STATE OF LOUISIANA
DEPARTMENT OF HIGHWAYS

DESIGNED BY: [Signature]
CHECKED BY: [Signature]
TRACED BY: [Signature]

DATE	DESCRIPTION	BY

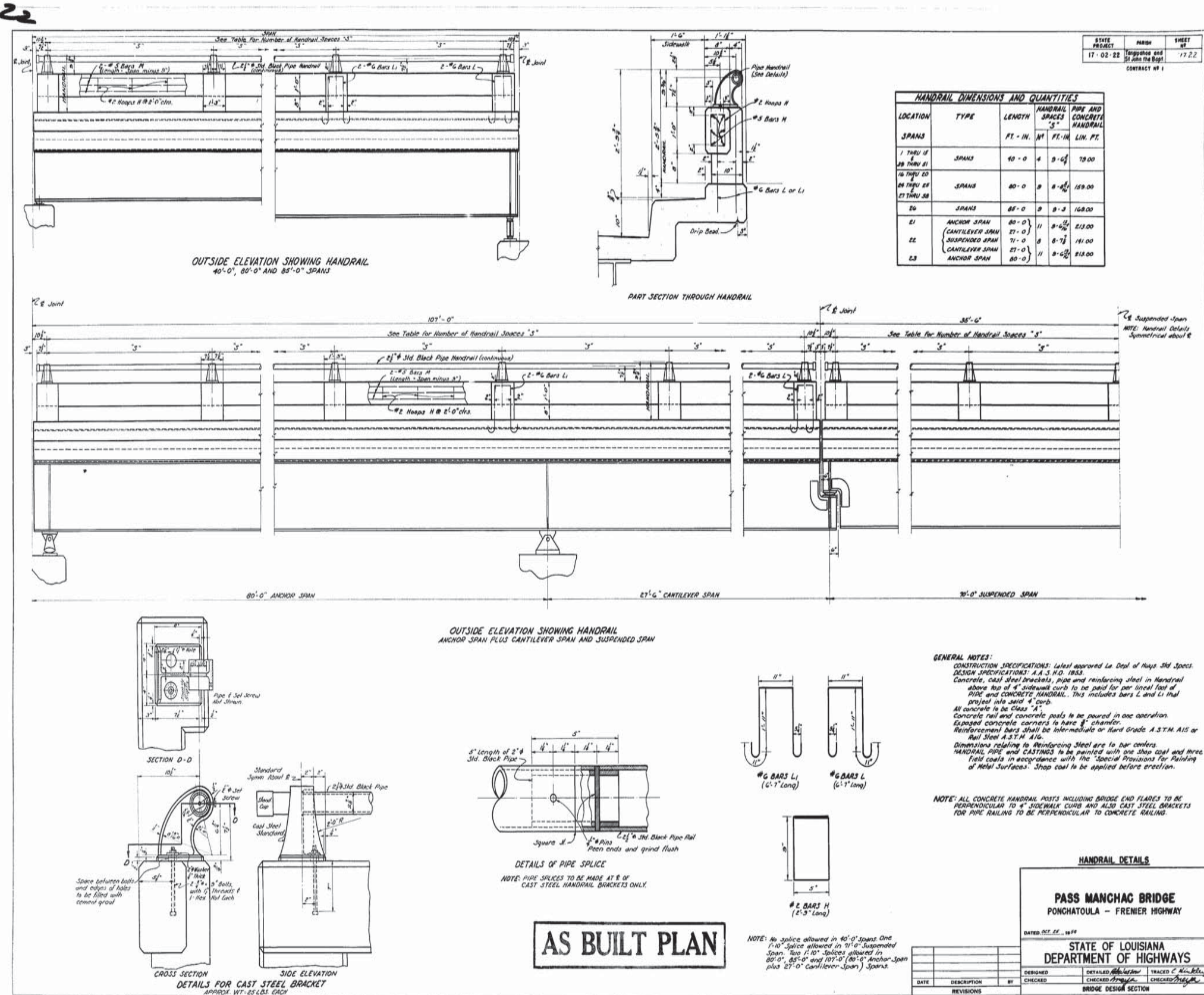
BRIDGE DESIGN SECTION

SHEET 2 OF 2

FINAL TRACINGS

AS BUILT PLANS





STATE PROJECT	PARISH	SHEET NO.
17-02-22	Orleans and St. John the Baptist	17.2.2
CONTRACT NO. 1		

LOCATION	TYPE	HANDRAIL PIPE AND CONCRETE SPACES		HANDRAIL PIPE AND CONCRETE SPACES	
		FT. - IN.	NO.		FT. - IN.
1 THRU 14	SPANS	40 - 0	4	8 - 6 1/2	78.00
15 THRU 21		80 - 0	8	8 - 6 1/2	156.00
22	SPANS	85 - 0	8	8 - 3	168.00
21	ANCHOR SPAN	80 - 0	11	8 - 6 1/2	213.00
22		80 - 0	11	8 - 6 1/2	213.00
23	CANTILEVER SPAN	27 - 0	8	8 - 7 1/2	181.00
24		27 - 0	8	8 - 7 1/2	181.00
25	SUSPENDED SPAN	71 - 0	11	8 - 6 1/2	213.00
26		71 - 0	11	8 - 6 1/2	213.00

GENERAL NOTES:

CONSTRUCTION SPECIFICATIONS: Latest approved in Dept of Highways 3rd Specs.

DESIGN SPECIFICATIONS: A.A.S. R.O. 1953.

Concrete, cast steel brackets, pipe and reinforcing steel in Handrail above top of 4" sidewalk curb to be paid for per lineal foot of PIPE AND CONCRETE HANDRAIL. This includes bars L and Li that project into said curb.

All concrete to be Class "A".

Concrete rail and concrete posts to be poured in one operation.

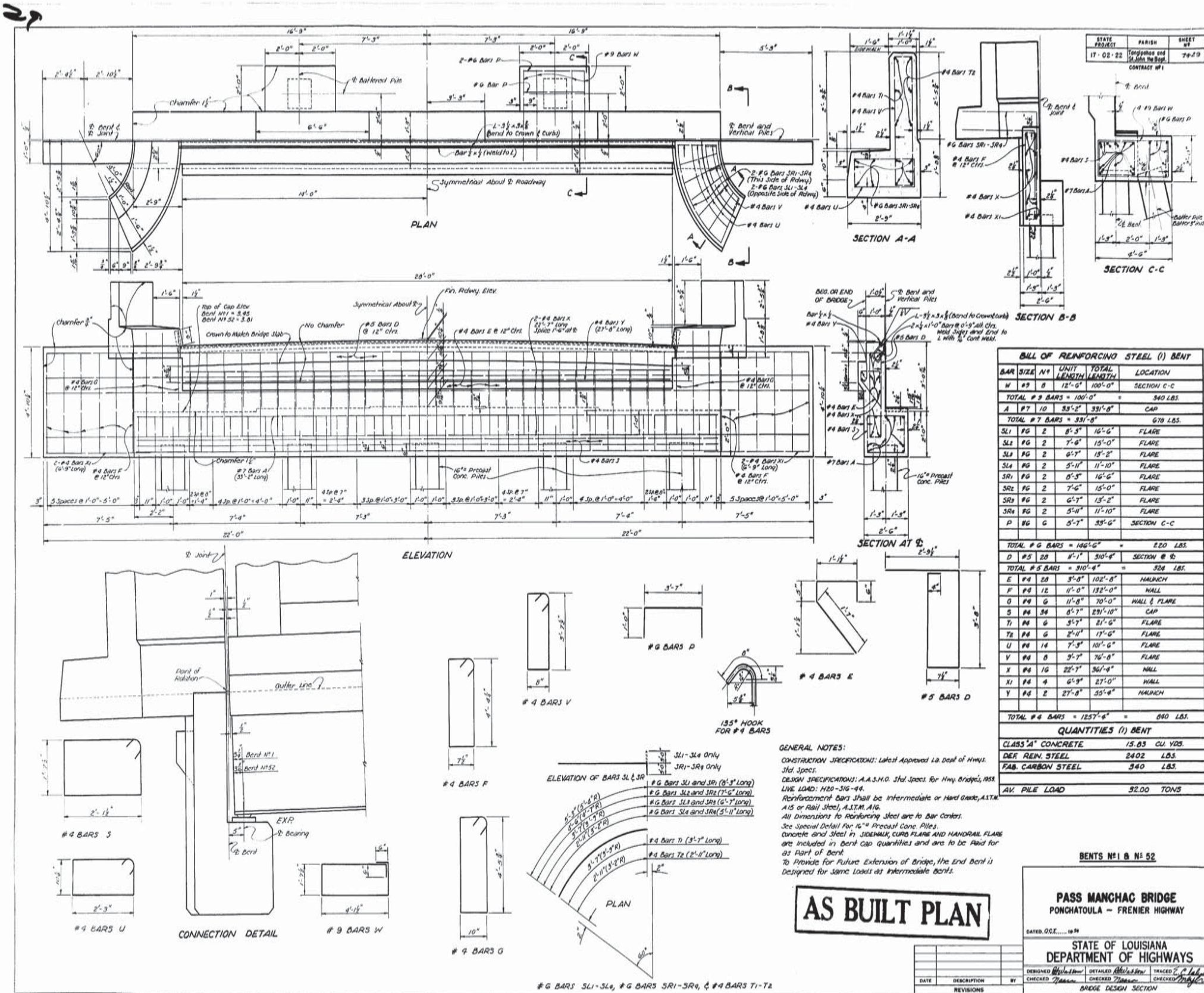
Exposed concrete corners to have 3" chamfer.

Reinforcement bars shall be Intermediate or Hard Grade A.S.T.M. A15 or Rail Steel A.S.T.M. A16.

Dimensions relating to Reinforcing Steel are to bar centers.

HANDRAIL PIPE AND CASTINGS to be painted with one Shop coat and three field coats in accordance with the "Special Provisions for Painting of Metal Surfaces". Shop coat to be applied before erection.

NOTE: ALL CONCRETE HANDRAIL POSTS INCLUDING BRIDGE END FLARES TO BE PERPENDICULAR TO 4" SIDEWALK CURB AND ALSO CAST STEEL BRACKETS FOR PIPE RAILING TO BE PERPENDICULAR TO CONCRETE RAILING.



STATE PROJECT	PARISH	SHEET #
17-02-22	Tangipahoa and St. John the Baptist	74-2-D
CONTRACT # 1		

BILL OF REINFORCING STEEL (1) BENT				
BAR SIZE	N ^o	UNIT LENGTH	TOTAL LENGTH	LOCATION
W #3	8	12'-0"	100'-0"	SECTION C-C
TOTAL # 3 BARS = 100'-0" = 340 LBS.				
A #7	10	33'-2"	331'-0"	CAP
TOTAL # 7 BARS = 331'-0" = 670 LBS.				
SL1 #6	2	8'-3"	16'-6"	FLARE
SL2 #6	2	7'-6"	15'-0"	FLARE
SL3 #6	2	6'-7"	13'-4"	FLARE
SL4 #6	2	5'-11"	11'-10"	FLARE
SR1 #6	2	6'-3"	12'-6"	FLARE
SR2 #6	2	7'-6"	15'-0"	FLARE
SR3 #6	2	6'-7"	13'-4"	FLARE
SR4 #6	2	5'-11"	11'-10"	FLARE
P #6	6	5'-7"	34'-0"	SECTION C-C
TOTAL # 6 BARS = 186'-0" = 220 LBS.				
D #5	20	8'-7"	174'-0"	SECTION B-B
TOTAL # 5 BARS = 174'-0" = 324 LBS.				
E #4	20	3'-0"	102'-0"	HALUNCH
F #4	12	11'-0"	132'-0"	HALL
G #4	11	11'-8"	129'-8"	HALL & FLARE
S #4	36	8'-7"	291'-0"	CAP
T #4	6	3'-7"	22'-0"	FLARE
U #4	14	7'-3"	102'-0"	FLARE
V #4	8	3'-7"	76'-0"	FLARE
X #4	16	22'-7"	361'-4"	HALL
Y #4	4	6'-9"	27'-0"	HALL
Z #4	2	27'-8"	55'-4"	HALUNCH
TOTAL # 4 BARS = 1257'-0" = 640 LBS.				
QUANTITIES (1) BENT				
CLASS 'A' CONCRETE				15.85 CU. YDS.
DEK REIN. STEEL				2402 LBS.
FAB. CARBON STEEL				340 LBS.
AV. PILE LOAD				32.00 TONS

GENERAL NOTES:
 CONSTRUCTION SPECIFICATIONS: Latest Approved La. Dept. of Hwy. Std. Specs.
 DESIGN SPECIFICATIONS: A.A.S.H.O. Std. Specs. for Hwy. Bridges, 1958
 LIVE LOAD: H20-S16-44.
 Reinforcement Bars shall be Intermediate or Hard Grade, ASTM A15 or Rail Steel, A.S.T.M. A16.
 All dimensions to Reinforcing Steel are to Bar Centers.
 See Special Detail for 16" Precast Conc. Piles.
 Concrete and Steel in SIDEWALK, CURB, FLARE AND HANDRAIL FLARE are included in bent cap quantities and are to be paid for as Part of Bent.
 To Provide for Future Extension of Bridge, the End Bent is designed for same loads as intermediate bents.

AS BUILT PLAN

BENTS No. 1 & No. 52

PASS MANCHAC BRIDGE
 PONCHATOLA - FRENIER HIGHWAY

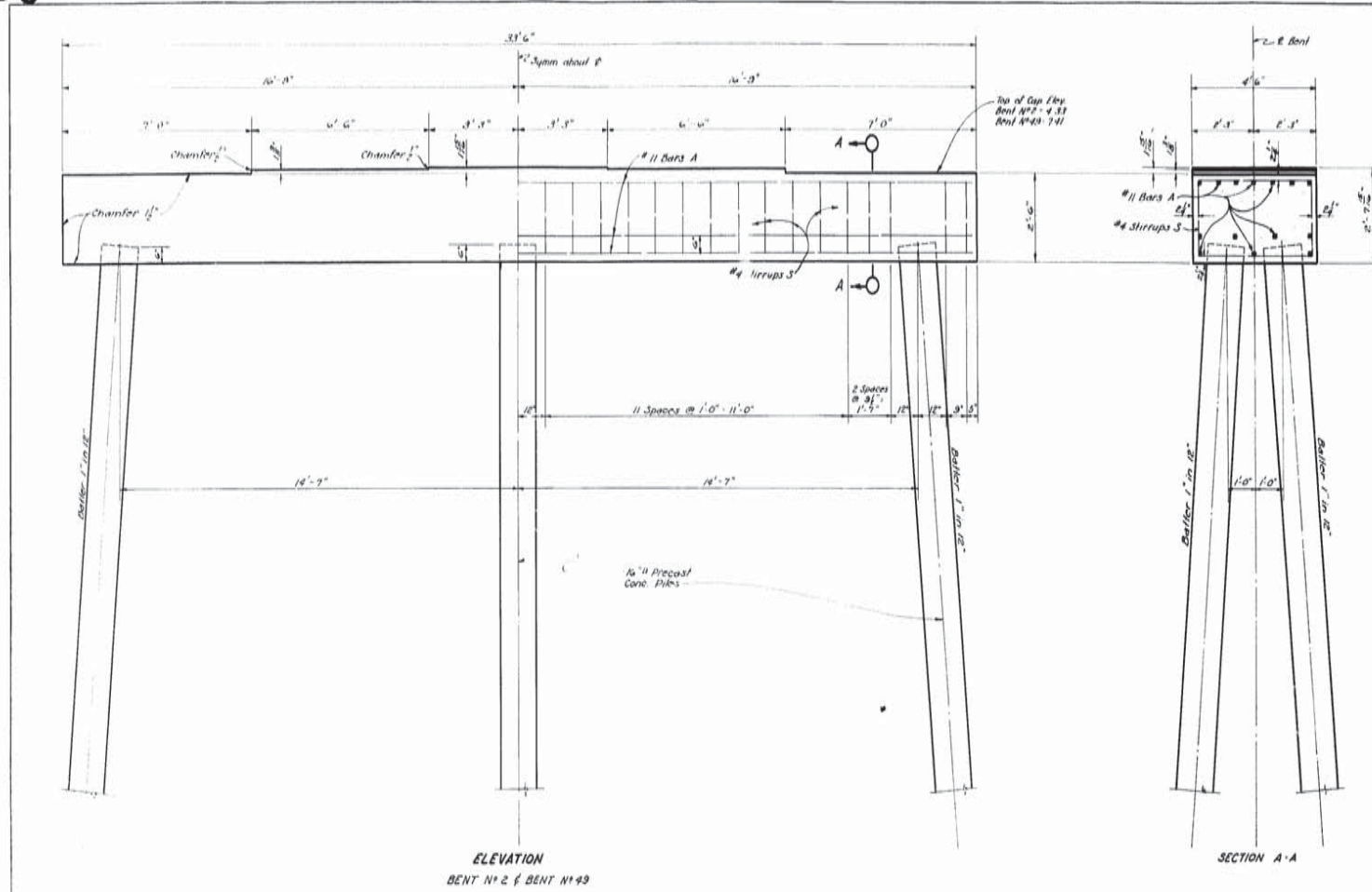
DATED OCT. 1954

STATE OF LOUISIANA
 DEPARTMENT OF HIGHWAYS

DESIGNED	Detailed	Checked	Checked
CHECKED	Checked	Checked	Checked

BRIDGE DESIGN SECTION

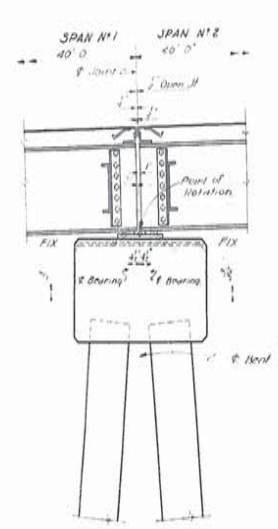
30



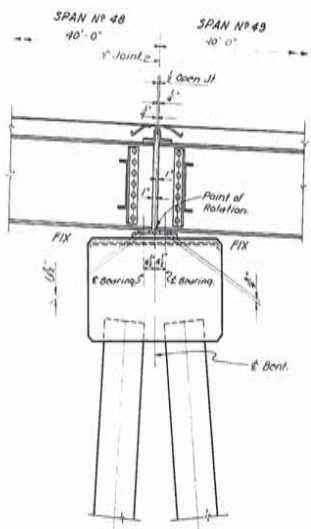
STATE	PARISH	SHEET
LA	ORLEANS	40
PROJECT	CONTRACT	NO.
17-02-23	LA 38	40

ESTIMATED QUANTITIES IN ONE BENT

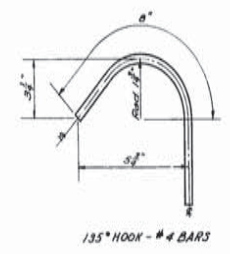
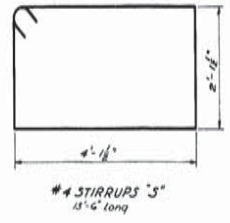
BAR	NO	SIZE	UNIT LENGTH	TOTAL LENGTH
A	11	#11	35'-2"	391'-4"
S	3	#4	15'-6"	46'-0"
TOTAL #11 BARS = 464'-4" = 2467 LBS.				
TOTAL #4 BARS = 432'-0" = 203 LBS.				
CLASS A CONCRETE = 14.18 CU. YDS.				
DEFORMED REINF. STEEL = 27.36 LBS.				
MAXIMUM PILE LOAD = 32.00 TONS/PILE				



CONNECTION DETAIL
BENT #2
REINFORCING NOT SHOWN



CONNECTION DETAIL
BENT #49
REINFORCING NOT SHOWN



GENERAL NOTES:
 CONSTRUCTION SPECIFICATIONS: Latest approved by Dept of Hwy & Streets
 DESIGN SPECIFICATIONS: A.A.S.H.O. 1953
 Live Load: H20-S16-44
 All dimensions to reinforcing steel are to bar centers.
 Reinforcement bars shall be intermediate or hard grade A.S.T.M. A-15
 or Rail Steel A.S.T.M. A-14.
 Chamfer all exposed corners 1/2" unless otherwise noted.
 See Special Detail for 16" Precast Conc. Piles.

AS BUILT PLAN

BENTS #2 AND #49

PASS MANCHAC BRIDGE
 PONCHATOULA - FRENIER HIGHWAY

DESIGNED: [Signature] CHECKED: [Signature] TRACED: C. [Signature]
 DATED: OCT. 12, 1949

STATE OF LOUISIANA
 DEPARTMENT OF HIGHWAYS

BRIDGE DESIGN SECTION

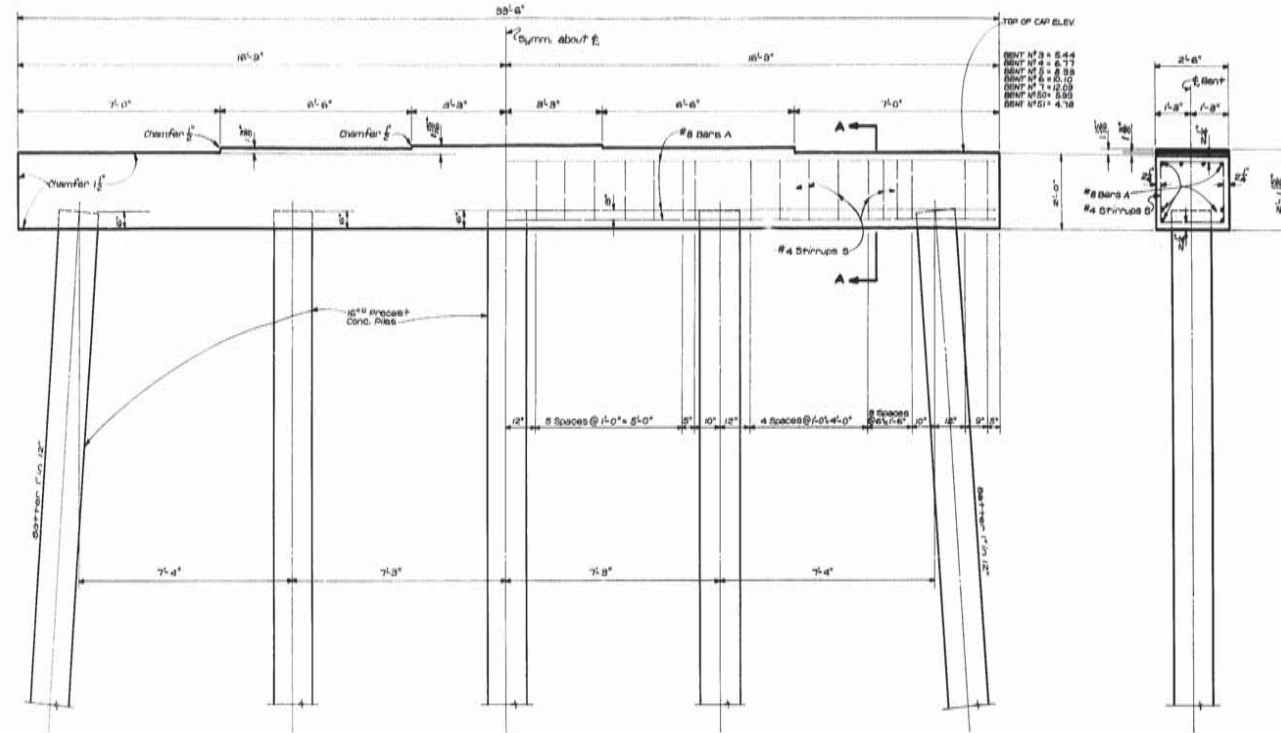
FINAL TRACINGS

AS BUILT PLANS



32

STATE PROJECT	PARISH	SHEET
17-02-22	Tangipahoa and Iberville Parishes	#6 51
CONTRACT # 1		

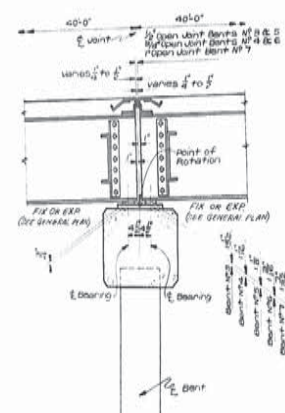


ELEVATION
BENTS N° 3 THRU N° 7 & N° 50 THRU N° 51

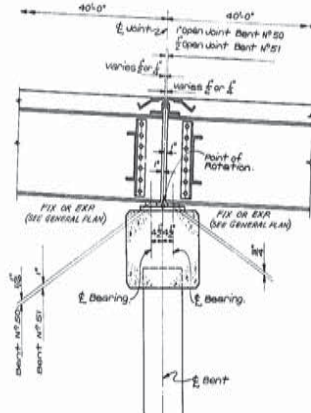
SECTION A-A

ESTIMATED QUANTITIES IN ONE BENT

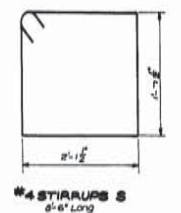
BAR	N°	SIZE	UNIT LENGTH	TOTAL LENGTH
A	8	#8	235'-2"	265'-4"
B	34	#4	5'-6"	289'-0"
TOTAL #8 BARS = 265'-4" = 709 LBS.				
TOTAL #4 BARS = 289'-0" = 139 LBS.				
CLASS "A" CONCRETE = 6.37 CU YDS.				
SPECIAL REINFORCING STEEL = 307 LBS.				
MAXIMUM PILE LOAD = 82007 lbs.				



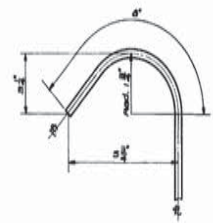
CONNECTION DETAIL
BENT N° 3 THRU BENT N° 7
REINFORCING NOT SHOWN



CONNECTION DETAIL
BENT N° 50 AND BENT N° 51
REINFORCING NOT SHOWN



#4 STIRRUPS S
6'-0" Long



185° HOOK - #4 BARS

GENERAL NOTES:
Construction Specifications: Latest approved La. Dept. of Highways Spec. Design Specifications A.A.H.G. 1985.
Live Load: H20-S16-44.
All dimensions to Reinforcing Steel are to Bar Centers.
Reinforcement Bars shall be Intermediate or Hard Grade A.S.T.M. A6 or All Steel A.S.T.M. A6.
Chamfer all exposed corners if unless otherwise noted.
See Special Detail for 16" Precast Conc. Piles.

AS BUILT PLAN

BENTS N° 3 THRU N° 7
AND
N° 50 THRU N° 51

PASS MANCHAC BRIDGE
PONCHATOULA - FRENIER HIGHWAY

DATED... DEC. 1994

STATE OF LOUISIANA
DEPARTMENT OF HIGHWAYS

DESIGNED	DETAILED	TRACED
CHECKED	CHECKED	CHECKED
DATE	DESCRIPTION	BY
REVISIONS		

BRIDGE DESIGN SECTION

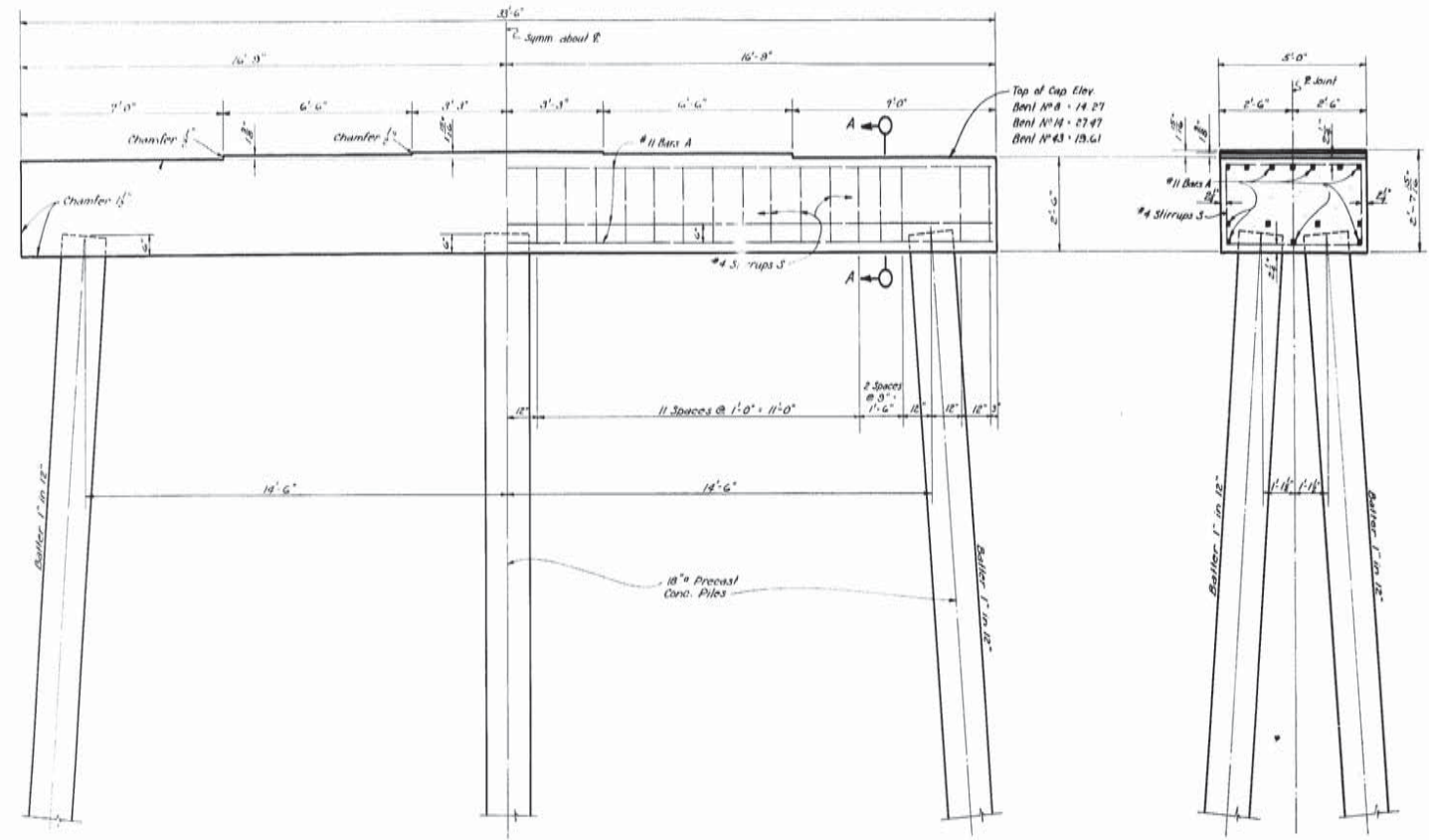
FINAL TRACINGS

AS BUILT PLANS



34

STATE PROJECT	PARISH	SHEET
17-02-22	Tangipahoa and St. John the Baptist	49-52
CONTRACT NO. 1		

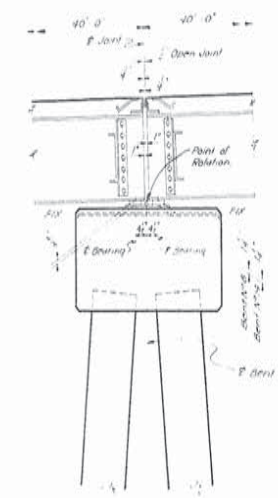


ELEVATION
BENT NO. 14 AND BENT NO. 43

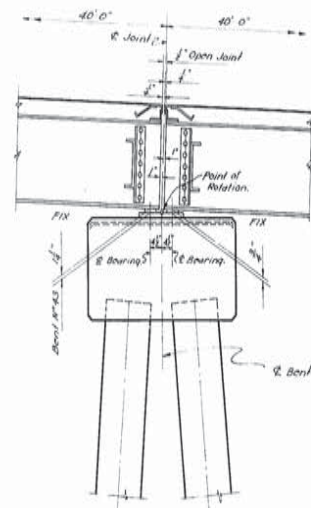
SECTION A-A

ESTIMATED QUANTITIES IN ONE BENT

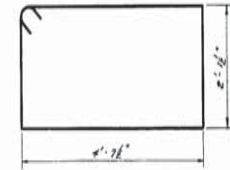
BAR	NO	SIZE	UNIT LENGTH	TOTAL LENGTH
A	14	#11	33'-2"	464'-0"
TOTAL NO 11 BARS = 464'-0" = 2467 LBS.				
S	32	#4	14'-6"	464'-0"
TOTAL NO 4 BARS = 464'-0" = 310 LBS.				
CLASS "A" CONCRETE = 15.73 CU. YDS.				
DEF. REINF. STEEL = 2777 LBS.				
MAXIMUM PILE LOAD = 36.00 TONS/PILE				



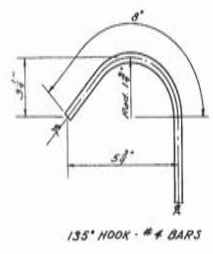
CONNECTION DETAIL
BENT NO. 8 & 14
REINFORCING NOT SHOWN



CONNECTION DETAIL
BENT NO. 43
REINFORCING NOT SHOWN



#4 STIRRUPS S
4'-7 1/2" LONG



135° HOOK - #4 BARS

GENERAL NOTES:
CONSTRUCTION SPECIFICATIONS: Latest approved in Dept. of Hwy. Div. 303 Specs.
DESIGN SPECIFICATIONS: A.A.S.H.O. 1953.
Live Load: H20-S16-44.
All dimensions to reinforcing steel are to bar centers.
Reinforcement bars shall be intermediate or hard grade A.S.T.M. A-15 or rail steel A.S.T.M. A-16.
Chamfer all exposed corners 1/2" unless otherwise noted.
See Special Detail for #4 Precast Conc. Piles.

AS BUILT PLAN

BENTS NO. 8, 14 AND BENT NO. 43

PASS MANCHAC BRIDGE
PONCHATOULA - FRENIER HIGHWAY

DATED: OCT. 12, 1954

STATE OF LOUISIANA
DEPARTMENT OF HIGHWAYS

DESIGNED	BY	TRACED	BY
CHECKED	BY	CHECKED	BY
BRIDGE DESIGN SECTION			

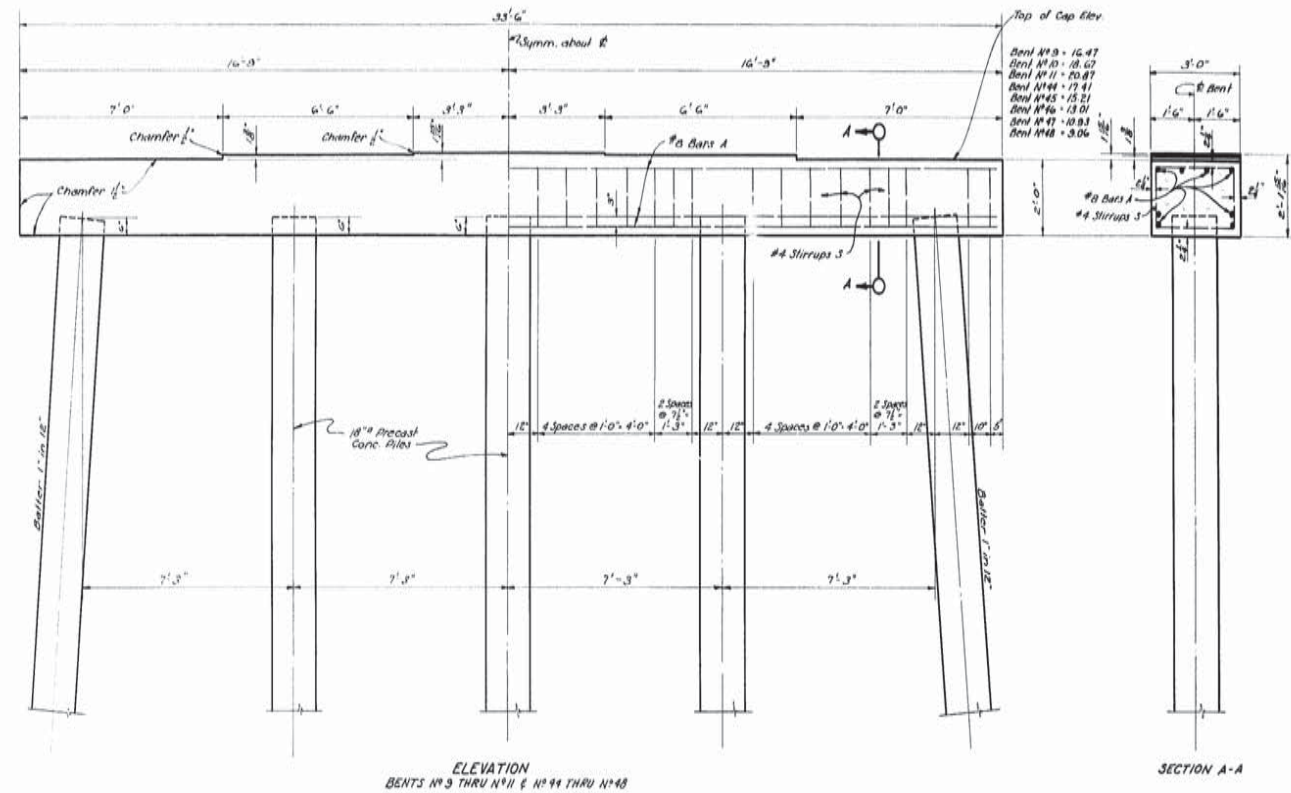
FINAL TRACINGS

AS BUILT PLANS

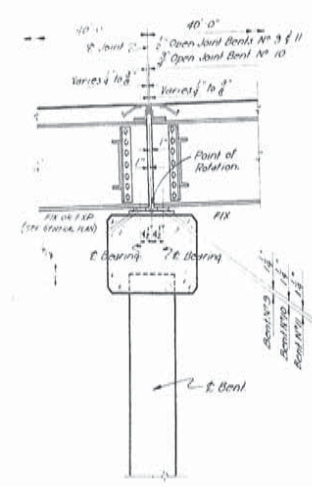


38

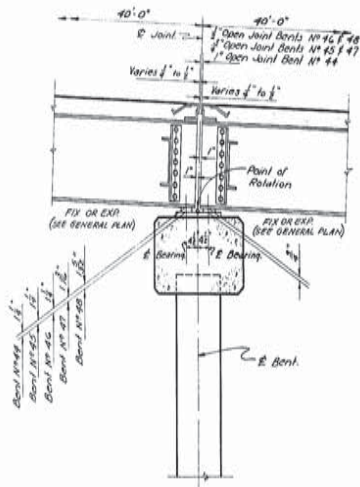
STATE PROJECT	PARISH	SHEET NO.
17-02-22	Vermilion and St. John the Baptist	28-55
CONTRACT NO. 1		



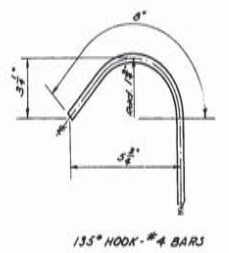
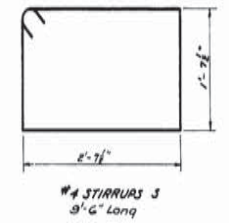
BAR	N ^o	SIZE	UNIT LENGTH	TOTAL LENGTH
A	8	#3	33'-2"	265'-4"
TOTAL #3 BARS = 265'-4" = 708 LBS				
S	32	#4	9'-0"	304'-0"
TOTAL #4 BARS = 304'-0" = 803 LBS				
CLASS "A" CONCRETE = 7.58 CU. YD.				
DEF. REINFC. STEEL = 811 LBS.				
MAXIMUM PILE LOAD = 33.00 TONS/PILE				



CONNECTION DETAIL
BENT #3 THRU BENT #11
REINFORCING NOT SHOWN



CONNECTION DETAIL
BENT #12 THRU BENT #48
REINFORCING NOT SHOWN



GENERAL NOTES:
CONSTRUCTION SPECIFICATIONS: Latest approved in Dept. of Highw. Std. Specs.
DESIGN SPECIFICATIONS: A.A.S.H.O. 1953.
Live Load: H20-316-49.
All dimensions to reinforcing steel are to bar centers.
Reinforcement bars shall be intermediate or hard grade A.S.T.M. A15 or rail steel A.S.T.M. A16.
Chamfer all exposed corners 1/2" unless otherwise noted.
See Special Detail for 18" Precast Conc. Piles.

AS BUILT PLAN

BENTS # 9 THRU # 11
AND
#44 THRU # 48

PASS MANCHAC BRIDGE
PONCHATOULA - FRENIER HIGHWAY

DATED: Oct. 11, 1954

STATE OF LOUISIANA
DEPARTMENT OF HIGHWAYS

DESIGNED	BY	CHECKED	BY	TRACED	BY	CHECKED	BY
REVISIONS				BRIDGE DESIGN SECTION			

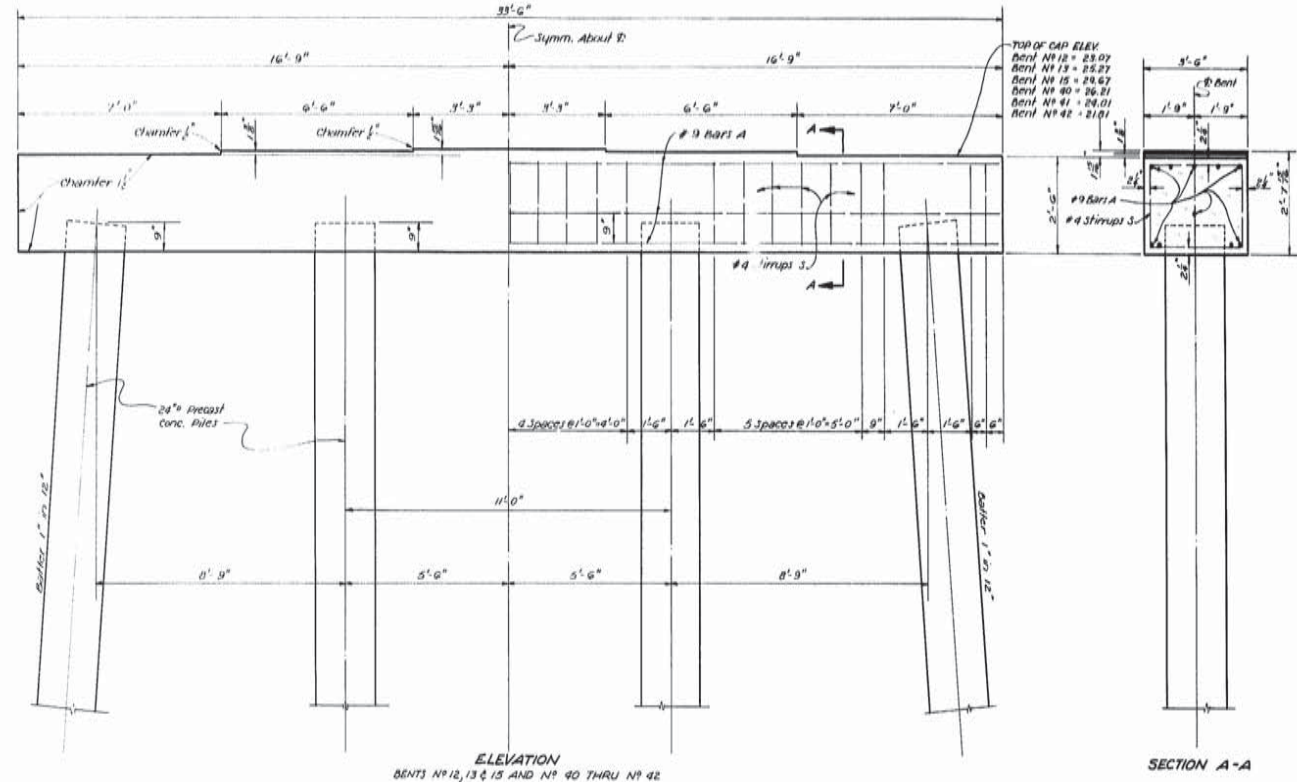
FINAL TRACINGS

AS BUILT PLANS



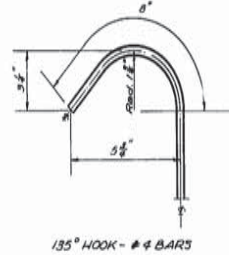
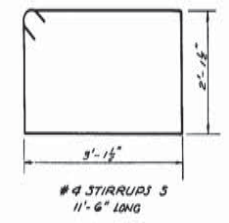
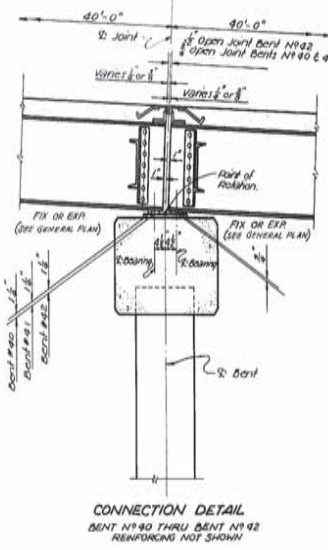
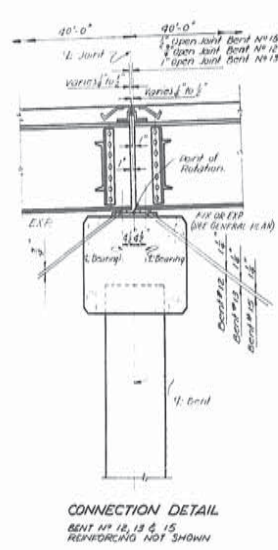
3D

STATE PROJECT	PARISH	SHEET NO.
17-02-22	Tangipahoa and St. John the Baptist	2434
CONTRACT NO. 1		



ESTIMATED QUANTITIES IN ONE BENT

BAR	Nº	SIZE	UNIT LENGTH	TOTAL LENGTH
A	10	#9	55'-2"	551'-0"
TOTAL #9 BARS = 551'-0" = 1122 LBS.				
S	27	#4	11'-0"	310'-0"
TOTAL #4 BARS = 310'-0" = 207 LBS.				
CLASS A CONCRETE				= 10.74 CU YD.
DEFORMED REINFORCING STEEL				= 1335 LBS.
MAXIMUM FILE LOAD				= 43.00 TONS/PILE



GENERAL NOTES:
 CONSTRUCTION SPECIFICATIONS: Latest Approved in Dept. of Hwys. Std. Specs.
 DESIGN SPECIFICATIONS: A.A.S.H.O. 1953.
 LIVE LOAD: H20-31G-44.
 All Dimensions to Reinforcing Steel are to Bar Centers.
 Reinforcement Bars shall be Intermediate or Hard Grade A.I.T.M. A-15 or Rail Steel A.S.T.M. A-16.
 Chamfer all exposed corners 1/2" unless otherwise noted.
 See Special Detail For 24" Precast Conc. Piles.

AS BUILT PLAN

BENTS Nº 12, 13 & 15 AND Nº 40 THRU 42

PASS MANCHAC BRIDGE
 PONCHATOULA - FRENIER HIGHWAY

STATE OF LOUISIANA
 DEPARTMENT OF HIGHWAYS

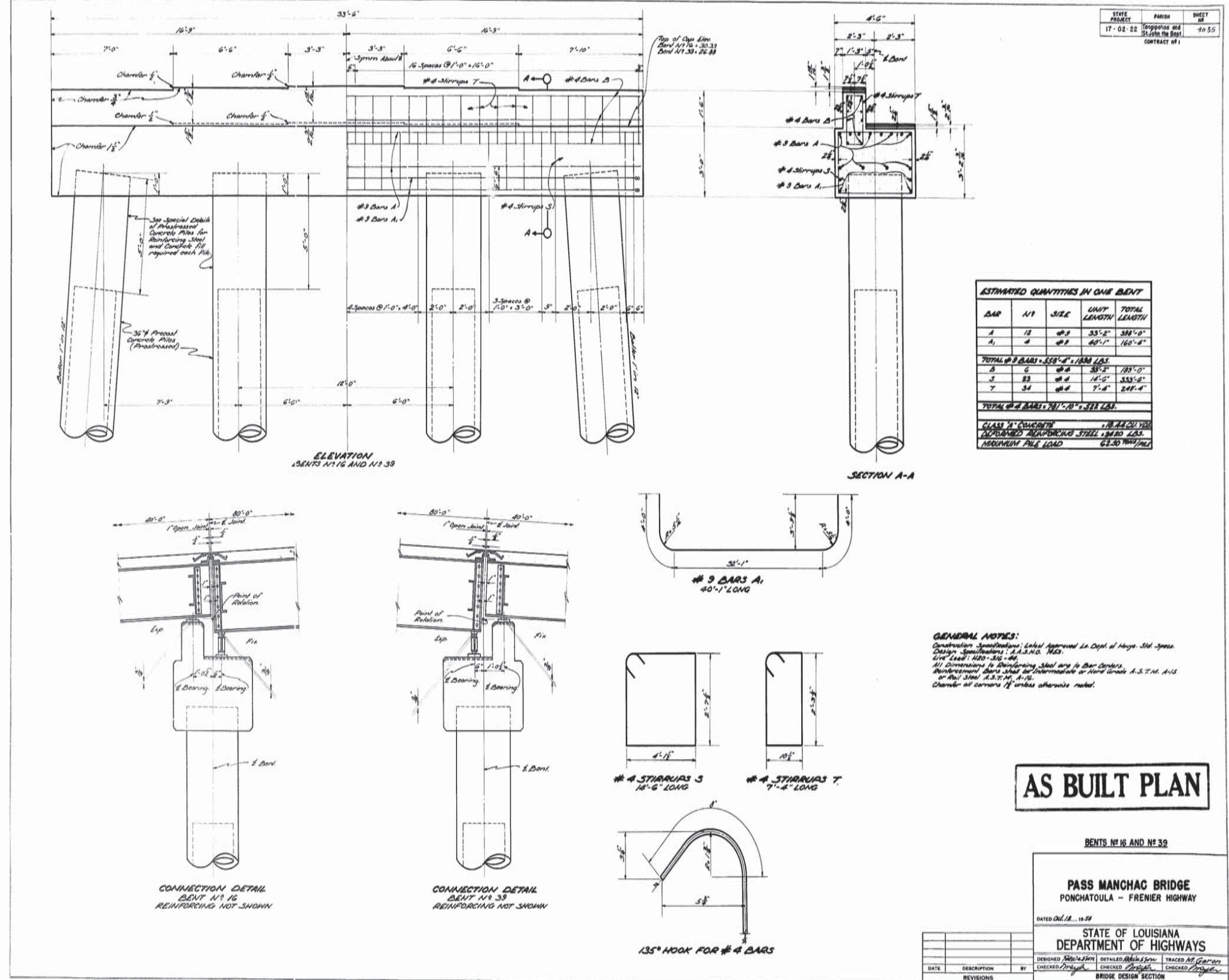
DESIGNED	BY	DATE
CHECKED	BY	DATE
REVISIONS		

FINAL TRACINGS

AS BUILT PLANS



40



AS BUILT PLAN

BENTS N° 16 AND N° 39

PASS MANCHAC BRIDGE
PONCHATOULA - FRENIER HIGHWAY

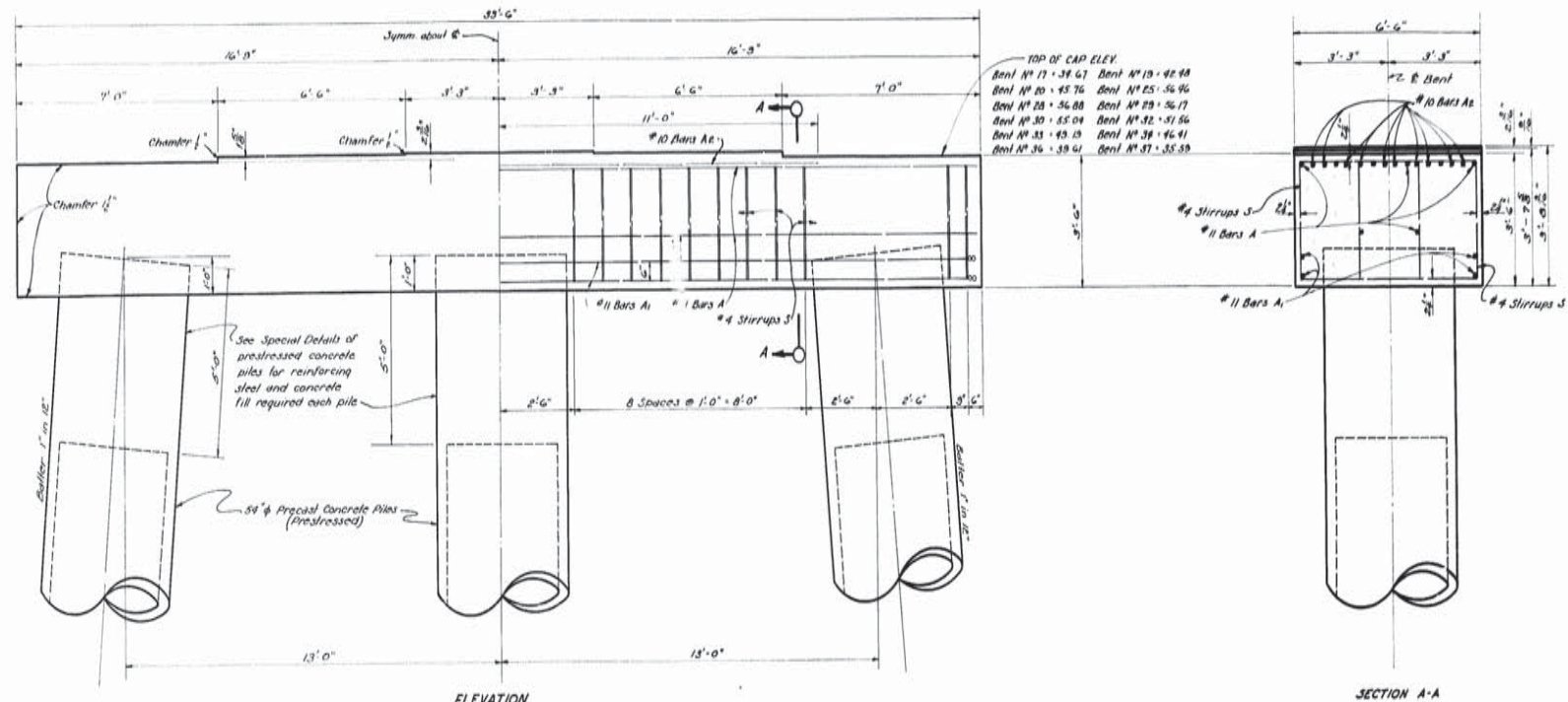
DESIGNED Oct. 18, 1954

STATE OF LOUISIANA
DEPARTMENT OF HIGHWAYS

DESIGNED: [Signature] CHECKED: [Signature] TRACED: M. G. [Signature]
 DATED: [Signature] CHECKED: [Signature] CHECKED: [Signature]

BRIDGE DESIGN SECTION

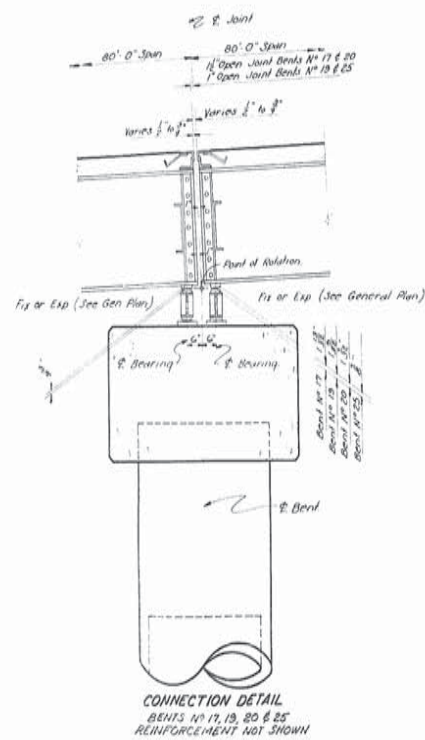
STATE PROJECT	PARISH	SHEET
17-02-22	Ponchatoula and St. John the Baptist	4-56
CONTRACT # 1		



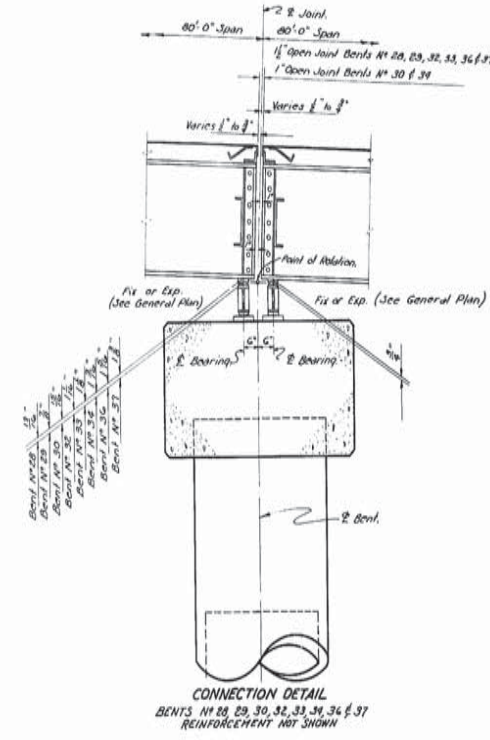
ELEVATION
BENTS # 17, 19, 20, 25, 28, 29, 30, 32, 33, 36, 36 & 37

SECTION A-A

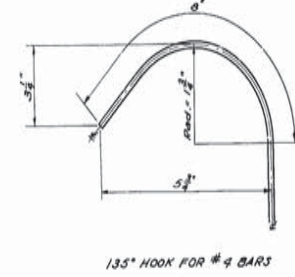
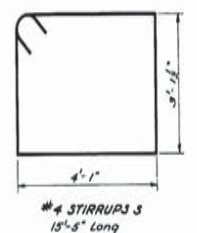
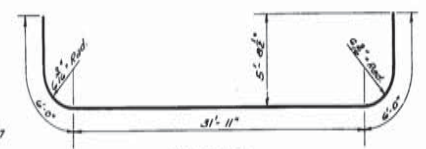
ESTIMATED QUANTITIES IN ONE BENT				
BAR	Nº	SIZE	UNIT LENGTH	TOTAL LENGTH
A	8	#11	33'-2"	265'-8"
A1	4	#11	43'-0"	172'-0"
TOTAL #11 BARS = 441'-0" = 2343 LBS.				
A2	10	#10	22'-0"	220'-0"
TOTAL #10 BARS = 220'-0" = 947 LBS.				
S	44	#4	15'-5"	678'-4"
TOTAL #4 BARS = 678'-4" = 453 LBS.				
CLASS A CONCRETE = 2717 CU YD.				
DEF. REINF. STEEL = 3743 LBS.				
MAXIMUM PILE LOAD = 115,000 LBS.				



CONNECTION DETAIL
BENTS # 17, 19, 20 & 25
REINFORCEMENT NOT SHOWN



CONNECTION DETAIL
BENTS # 28, 29, 30, 32, 33, 36 & 37
REINFORCEMENT NOT SHOWN



AS BUILT PLAN

GENERAL NOTES:
CONSTRUCTION SPECIFICATIONS: Latest approved by Dept. of Highways.
Standard Specifications.
DESIGN SPECIFICATIONS: A.A.S. H.D. 1953.
Live Load: H-20-316-44.
All dimensions to Reinforcing Steel are to bar centers.
Reinforcement Bars shall be Intermediate or Hard Grade A.S.T.M. A15 or Rail Steel A.S.T.M. A16.
Chamfer all corners 1/4" unless otherwise noted.

BENTS
17, 19, 20, 25, 28, 29, 30, 32, 33, 34, 36, & 37

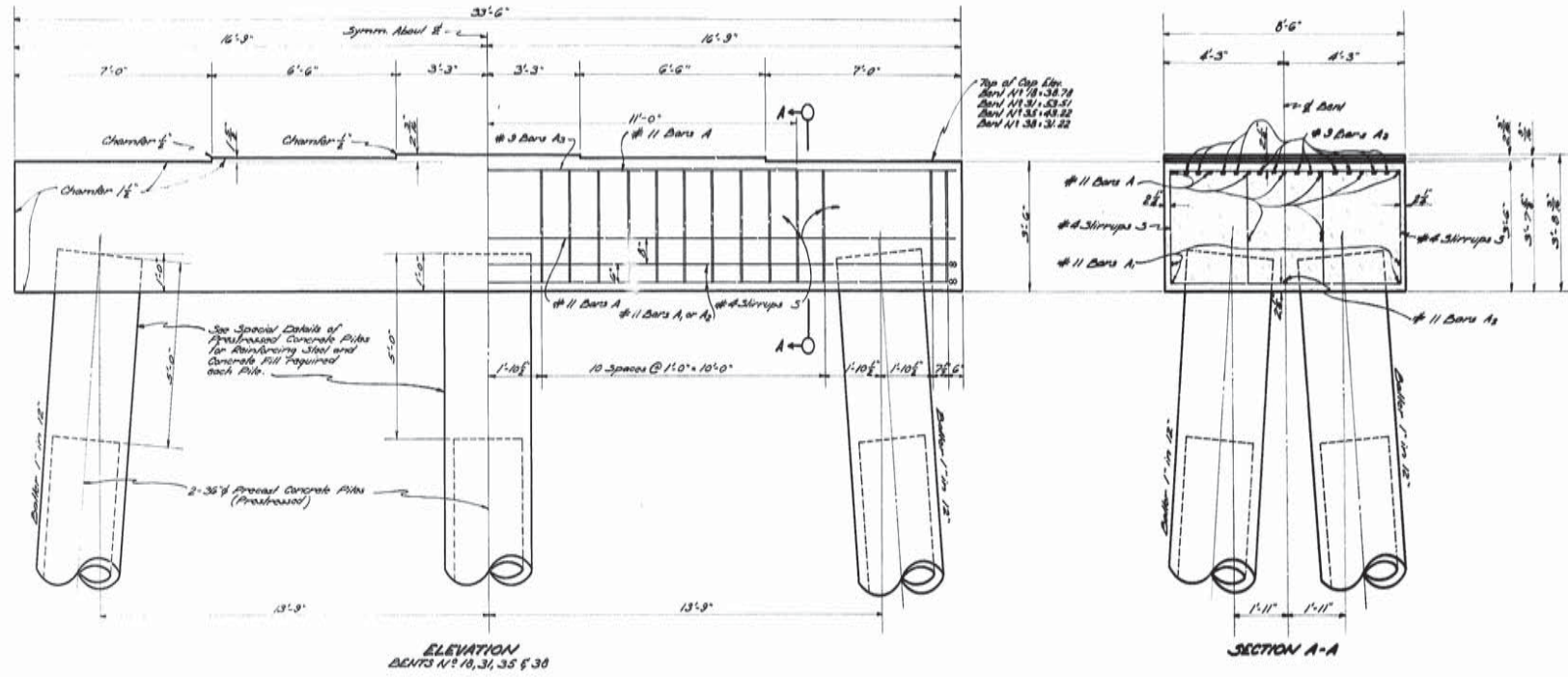
PASS MANCHAC BRIDGE
PONCHATOLA - FRENIER HIGHWAY

DESIGNED BY: [Signature]
CHECKED BY: [Signature]

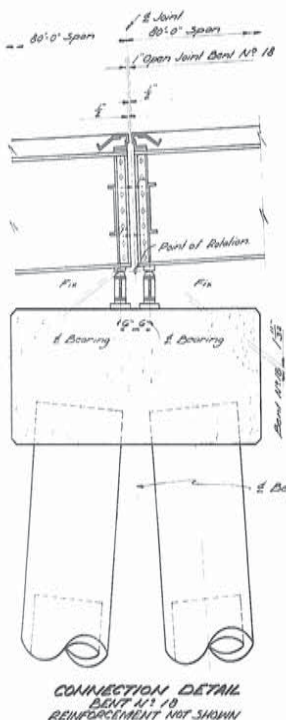
STATE OF LOUISIANA
DEPARTMENT OF HIGHWAYS

BRIDGE DESIGN SECTION

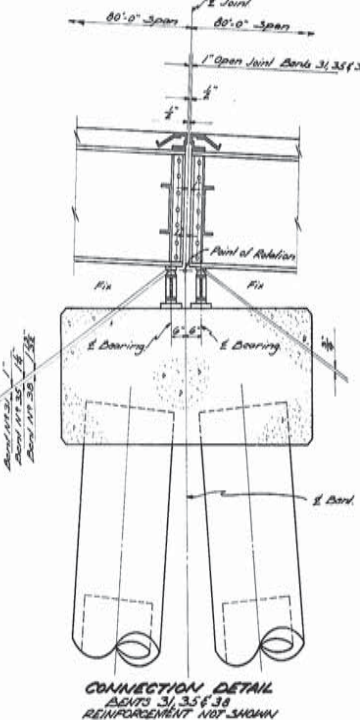
44



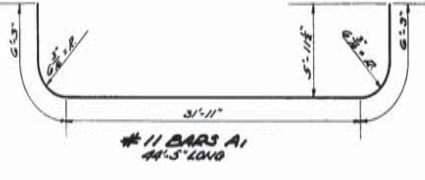
STATE PROJECT	PAR. NO.	SHEET NO.
17 02 22	104	99.57
CONTRACT NO. 1		



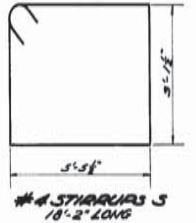
CONNECTION DETAIL BENT #10 REINFORCEMENT NOT SHOWN



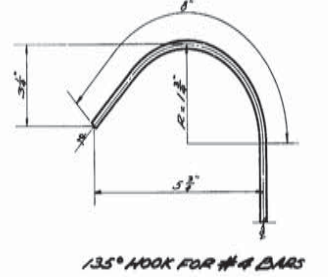
CONNECTION DETAIL BENTS #11, #13, #15 & #30 REINFORCEMENT NOT SHOWN



#11 BARS A1 44'-5" LONG



#4 STIRRUPS S 18'-2" LONG



135° HOOK FOR #4 BARS

ESTIMATED QUANTITIES IN ONE BENT

BAR	N/O	SIZE	UNIT LENGTH	TOTAL LENGTH
A	3	#11	33'-2"	231'-6"
A1	4	#11	44'-5"	177'-8"
A2	1	#11	32'-10"	32'-10"
TOTAL #11 BARS = 440'-0" = 8204 LBS.				
S	3	#4	22'-0"	66'-0"
S1	10	#4	18'-2"	182'-0"
TOTAL #4 BARS = 248'-0" = 431 LBS.				
TOTAL #4 BARS = 344'-0" = 631 LBS.				
CLASS II CONCRETE = 26.87 CU YDS				
DEFORMED REINFORCING STEEL = 4833 LBS				
MAXIMUM FILE LOAD = 67.50 TONS/PIECE				

GENERAL NOTES:
 Construction Specifications: Label Approved in Dept. of Highways Specifications, A.A.H.O. 1953.
 Design Specifications: A.A.H.O. 1953.
 Live Load: HS-20-44
 All dimensions relating to reinforcing steel are to Bent Centerline.
 Reinforcing Bars shall be Intermediate or Hard Grade A.S.T.M. A15 or A15M or A.S.T.M. A16.
 Chamfer all Corners 1/2" unless otherwise noted.

AS BUILT PLAN

BENTS 10, 31, 35 & 30

PASS MANCHAC BRIDGE
 PONCHATOULA - FRENIER HIGHWAY

DESIGNED BY: [Signature] DETAILED BY: [Signature] TRACED BY: [Signature]
 CHECKED BY: [Signature] CHECKED BY: [Signature] CHECKED BY: [Signature]

NO.	DATE	DESCRIPTION	BY
3-0-53	ADD #2-A2 BARS		

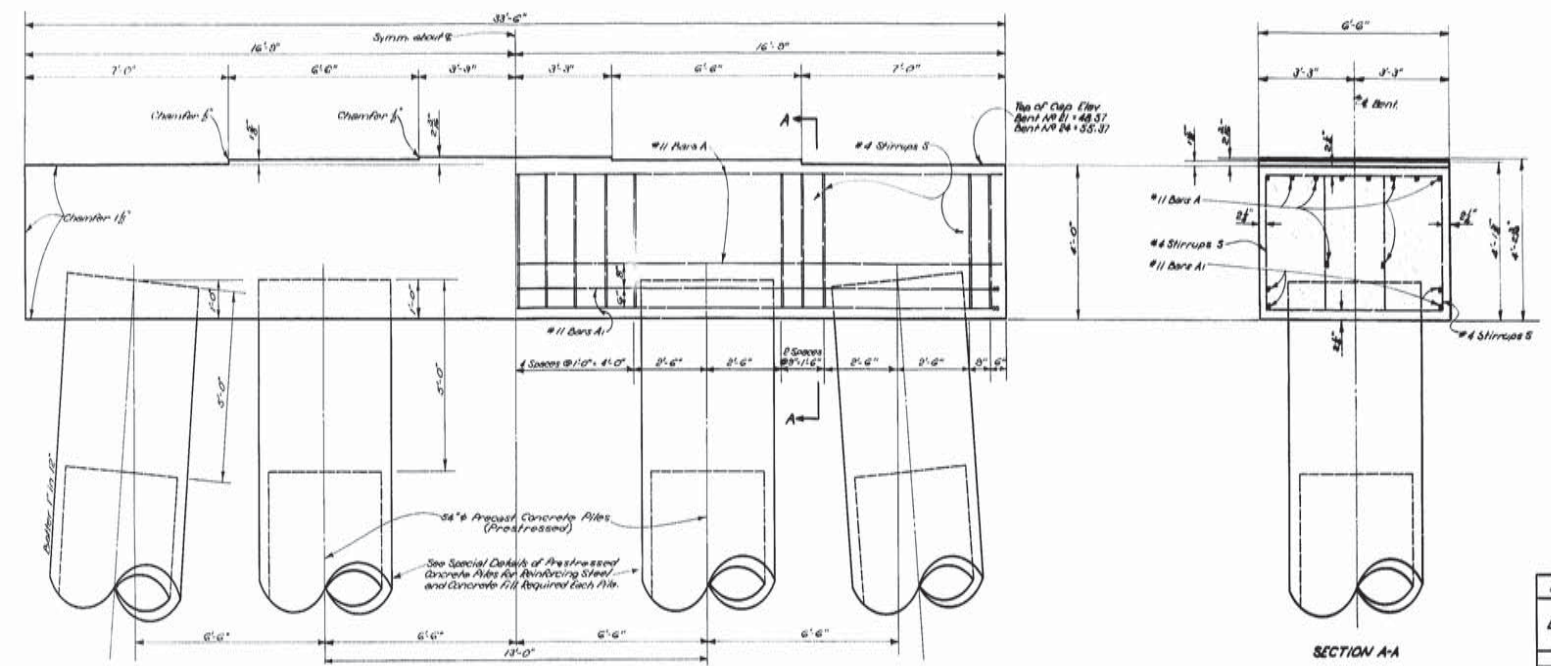
FINAL TRACINGS

AS BUILT PLANS



46

STATE	PARISH	SHEET
PROJECT	17-02-22	19
17-02-22		19
17-02-22		19
17-02-22		19

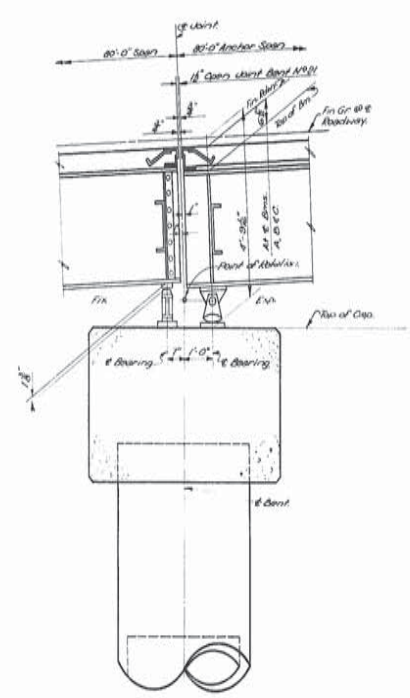


ELEVATION BENTS #21 AND 24

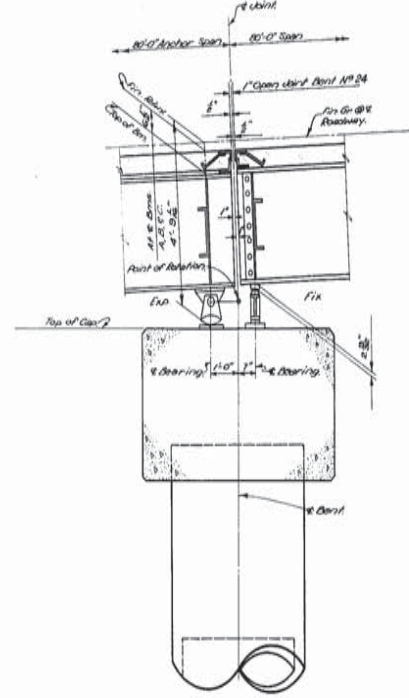
SECTION A-A

ESTIMATED QUANTITIES IN ONE BENT

BAR	NP	SIZE	UNIT LENGTH	TOTAL LENGTH
A	10	#11	38'-2"	331'-8"
S	4	#11	43'-11"	175'-6"
TOTAL #11 BARS = 307'-4" = 2683 LBS				
S	36	#4	16'-5"	633'-10"
TOTAL #4 BARS = 633'-10" = 617 LBS				
CLASS 'A' CONCRETE = 3061 CUYD				
DEFORMED REINFORCING STEEL = 3118 LBS				
MAXIMUM FILE LOAD = 862000 LBS				



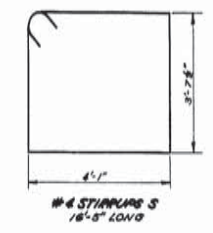
CONNECTION DETAIL BENT #21 REINFORCEMENT NOT SHOWN



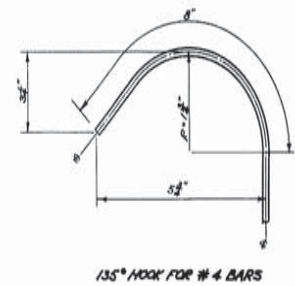
CONNECTION DETAIL BENT #24 REINFORCEMENT NOT SHOWN



#11 BAR A 43'-11" LONG



#4 STIRRUPS S 16'-5" LONG



135° HOOK FOR #4 BARS

GENERAL NOTES:
 Construction Specifications: Latest approved by Dept. of Highways Specifications.
 Design Specifications: A.A.S.H.O. 1958.
 Live Load: H 80-S18-44.
 All dimensions to reinforcement unless otherwise noted.
 Reinforcement bars shall be intermediate or hard grade A.S.T.M. A15 or rail steel A.S.T.M. A16.
 Chamfer all corners 1/8" unless otherwise noted.

AS BUILT PLAN

BENTS #21 AND 24

PASS MANCHAC BRIDGE
 PONCHATOULA - FRENIER HIGHWAY

DATED Oct. 15, 1954

STATE OF LOUISIANA
 DEPARTMENT OF HIGHWAYS

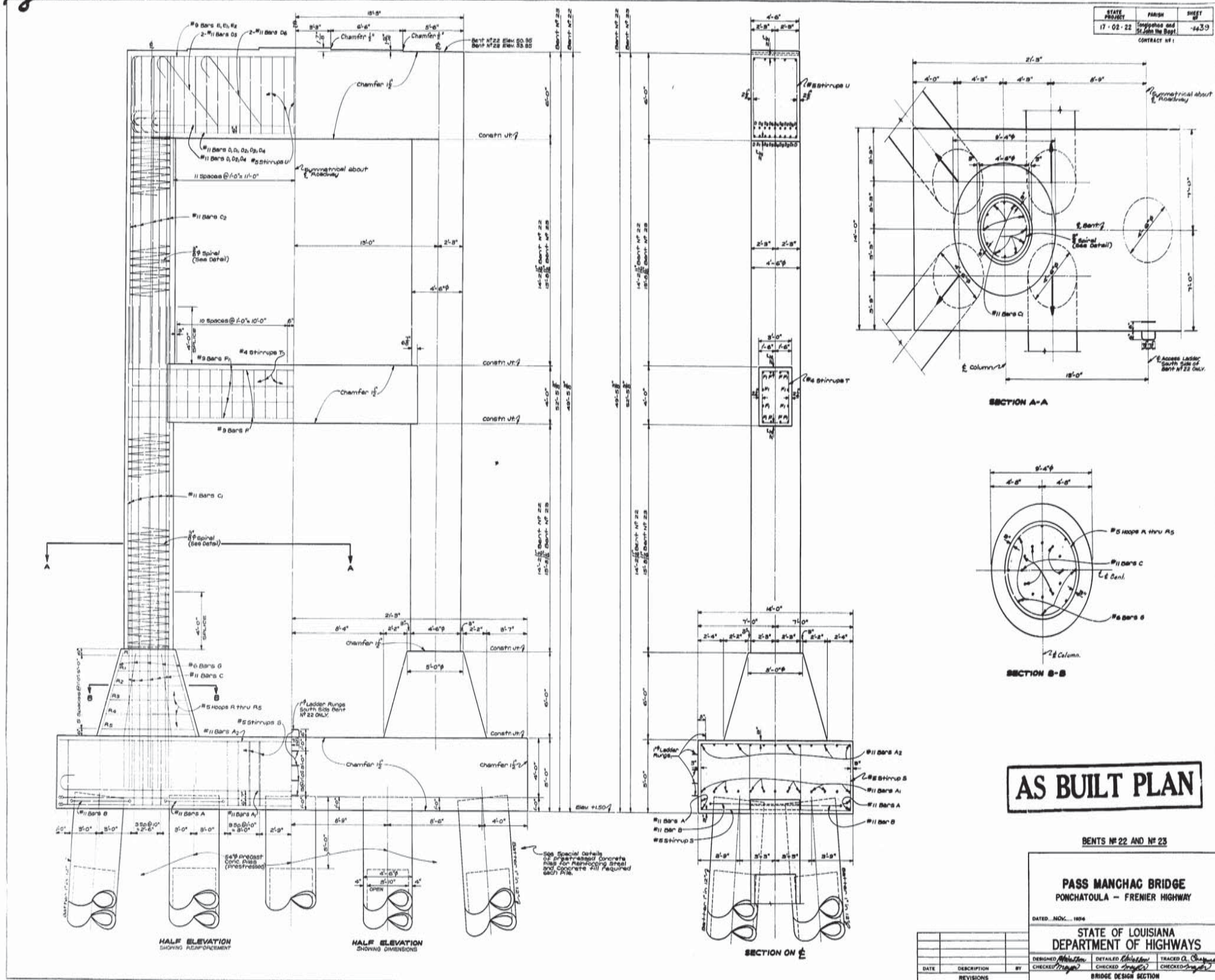
DESIGNED	BY	DATE	DESCRIPTION
CHECKED	BY	DATE	DESCRIPTION
BRIDGE DESIGN SECTION			

FINAL TRACINGS

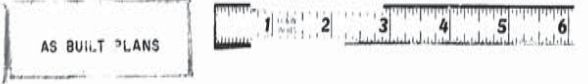
AS BUILT PLANS



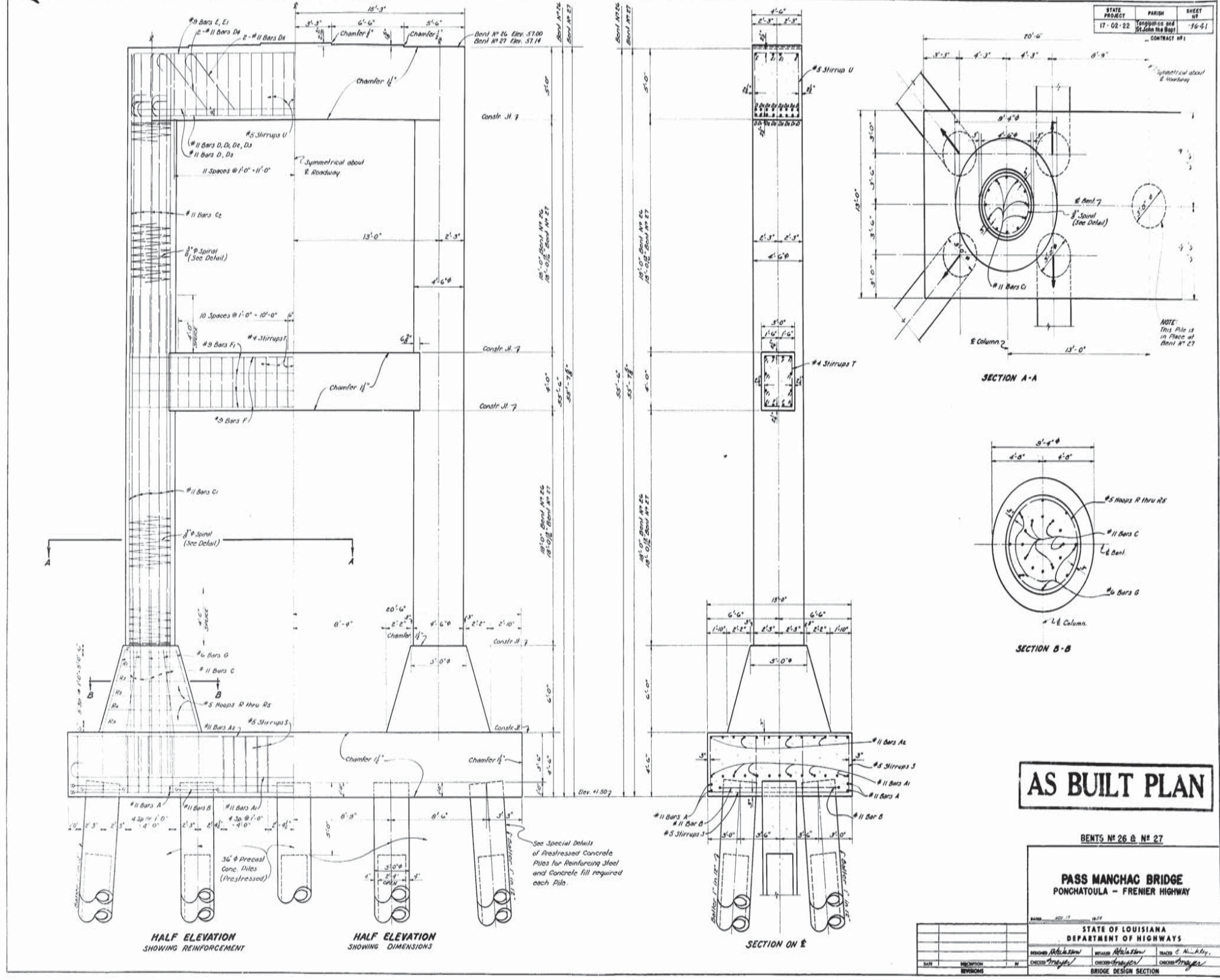
88



FINAL TRACINGS

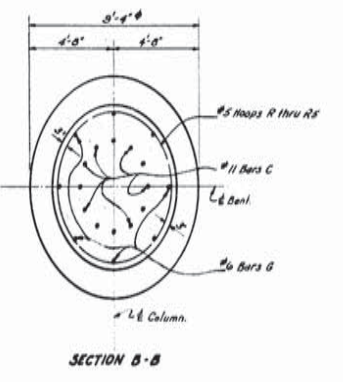


2



STATE PROJECT	PARISH	SHEET NO.
17-02-22	St. John the Baptist	19-61
CONTRACT NO.:		

SECTION A-A



AS BUILT PLAN

BENTS NO. 26 & NO. 27

PASS MANCHAC BRIDGE
PONCHATOLA - FRENIER HIGHWAY

STATE OF LOUISIANA
DEPARTMENT OF HIGHWAYS

DESIGNED BY: [Signature] CHECKED BY: [Signature] DRAWN BY: [Signature]

BRIDGE DESIGN SECTION

SHEET 1 OF 2

FINAL TRACINGS

AS BUILT PLANS



56

